

SW504 Winterization

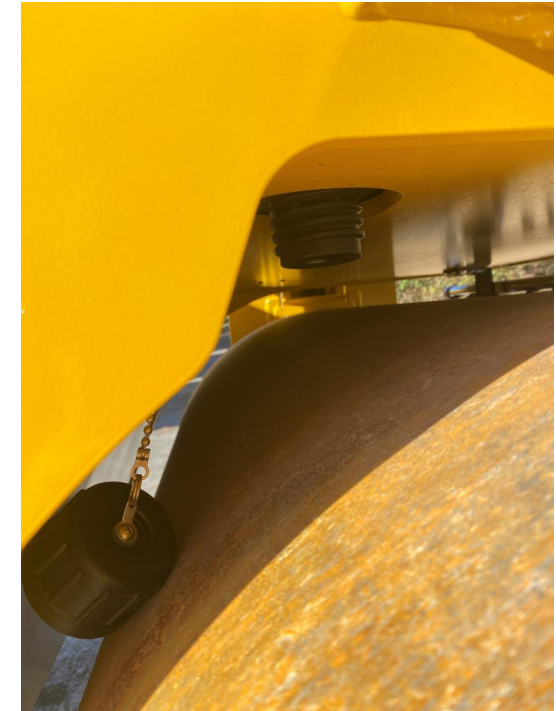
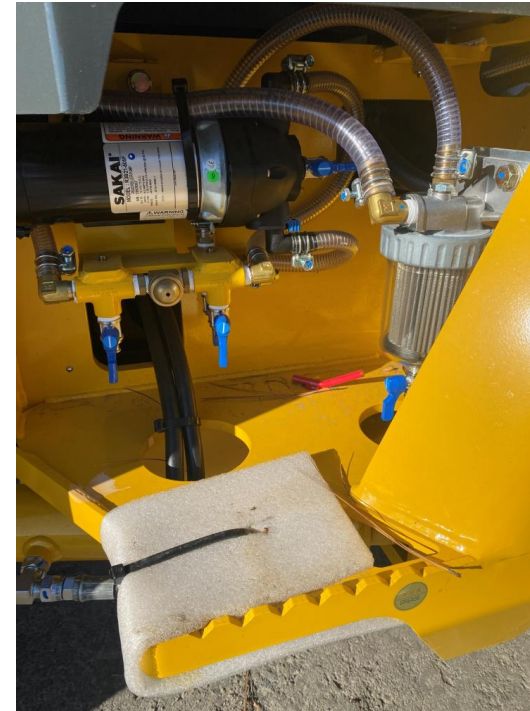
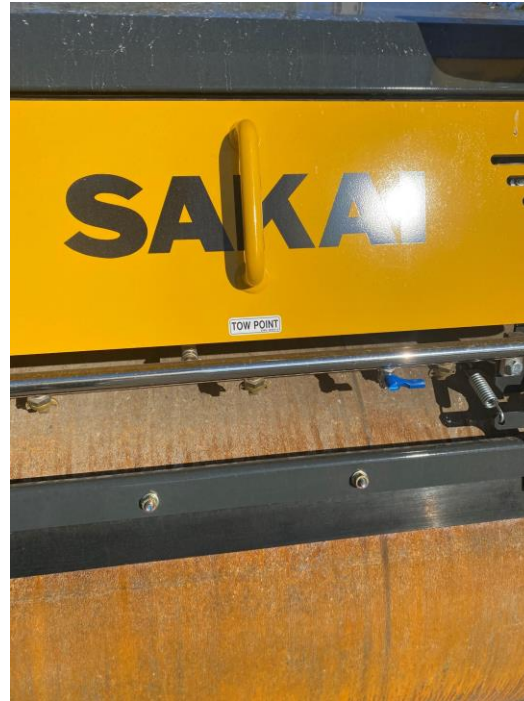


1. Start by Draining your full water system

1. Spray Bars

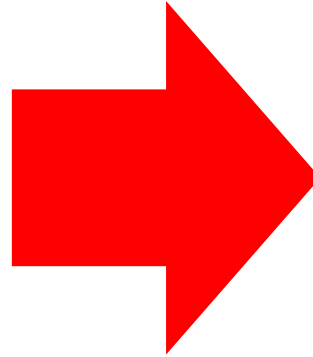
2. Pumps & Filters

3. Main Water tank



1. Drain Spray Bars Front & Rear

Closed



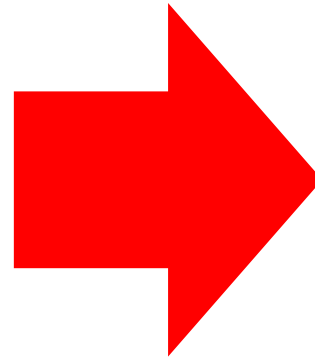
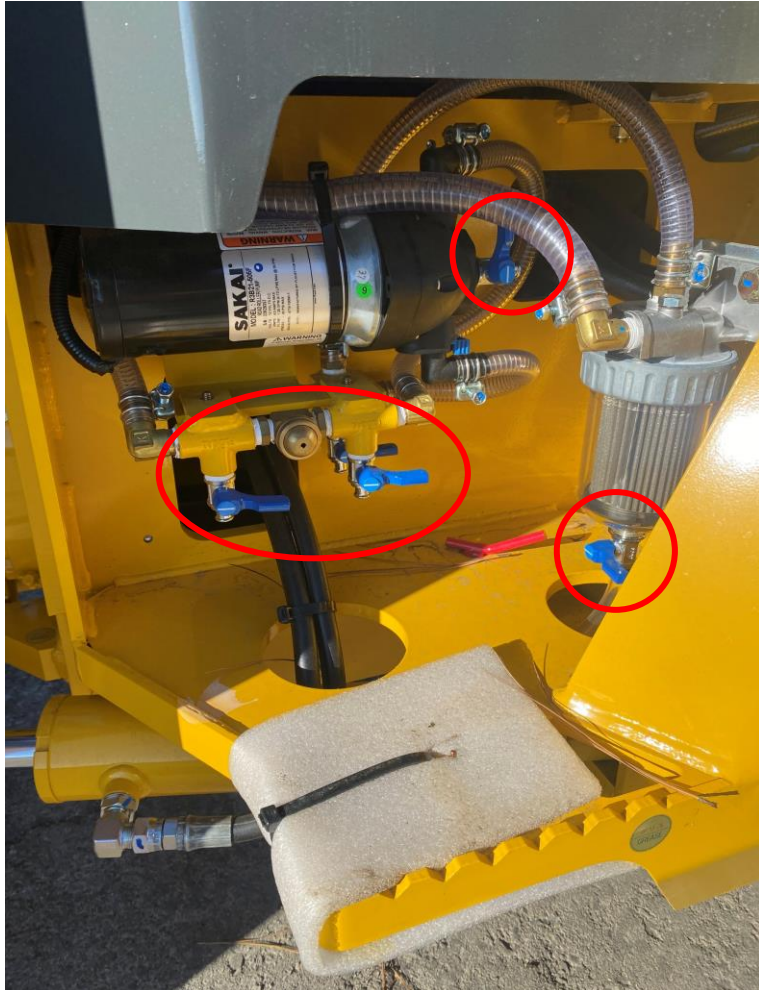
Open & Draining



SW504 Winterization

2. Drain Pump and Pump Filter

Closed



Open & Draining



3. Drain Main Water Tank

Drain Location



SW504 Winterization

Once water is fully drained return the valves back to the closed position



2. Pull Anti-Freeze into the water lines

1. Change directional valve to pull from outside source
2. Install ½ inch nipple with elbow
3. Run hose from nipple to bucket w/ anti-freeze
4. Turn on water system until anti-freeze begins spraying from nozzles



Location for Antifreeze fill

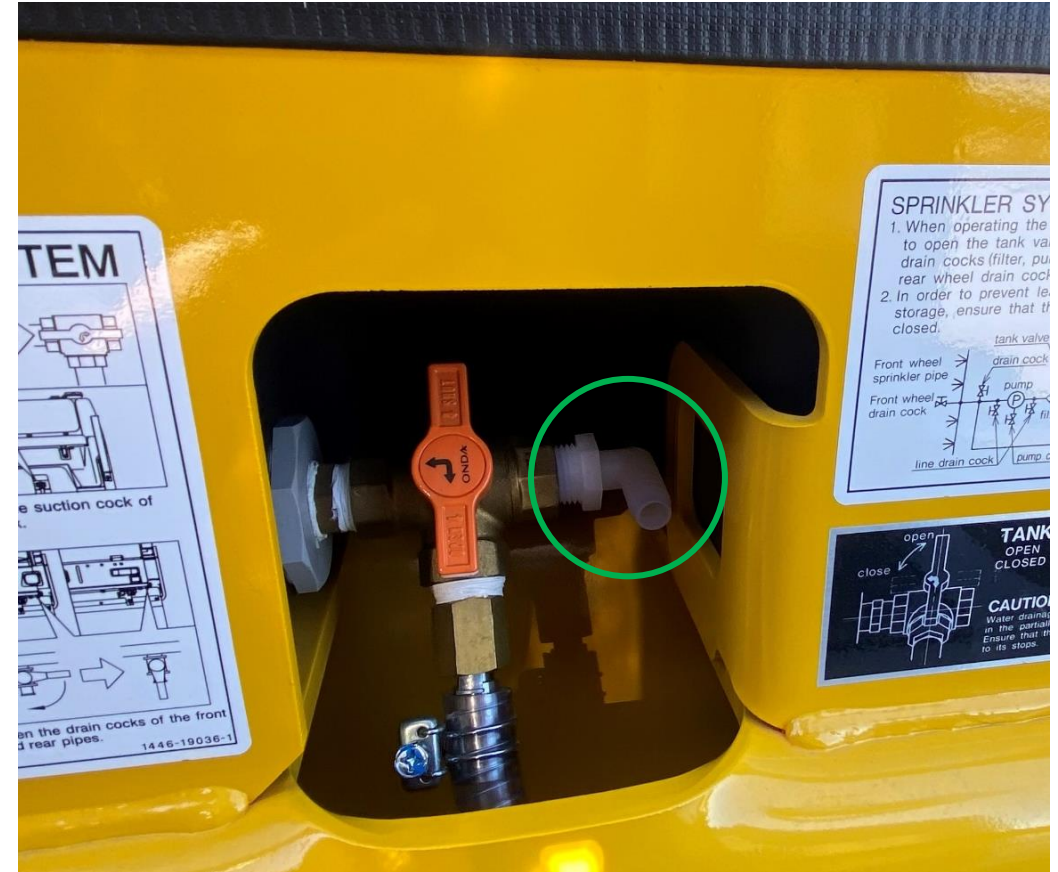
Winterization Valve Location



SW504 Winterization

1. Install ½ inch nipple w/elbow

Winterization Valve Location



SW504 Winterization

2. Turn directional valve to pull from attached hose

Closed



Open to pull from hose



1. Install ½ inch nipple w/elbow

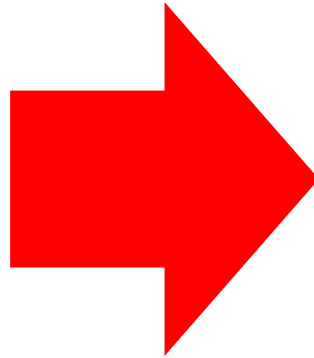
Winterization Valve Location



Teflon tape may be needed to prevent pulling air into the line.



3. Put attached hose in bucket of environmentally friendly antifreeze



Water System is on & will begin spraying from nozzles

4. Pull Antifreeze into spray line

1. To begin pulling anti-freeze through your water system turn your water system control switch to the CONT. position

2. Leave system on and running until you see anti-freeze begin to spray out of your spray nozzles

