

PC600

SHOP MANUAL

SAKAI®

3498-64994-0

Introduction

This manual provides important information to familiarize you with safe operating and maintenance procedures for your SAKAI product. Even though you may be familiar with similar equipment you must read and understand this manual before operating or servicing this unit.

Safety is everyone's business and it is one of your primary concerns. Knowing the guidelines presented in this manual will help provide for your safety, for the safety of those around you and for the proper operation and maintenance of the machine. Improper operation is dangerous and can result in injury or death.

Sakai Heavy Industries cannot foresee all possible circumstances or varying conditions to which the operator, serviceman or machine may be exposed to that might lead to a potential hazard. Therefore, the warnings and cautions listed in this manual and those placed on the machine are not intended to be all inclusive and liability for personal injury or damage to equipment or property cannot be assumed.

All information, specifications and illustrations in this publication are based on the product information available at the time that the publication was written. The contents may change without prior notice due to modifications of the model.

Refer to the engine manufacture's shop manual for data relative to engine maintenance and repairing.

CONTENTS

1. SAFETY

1. GENERAL SAFETY	
1-1. Understanding the Safety Symbols and Words	1-001
1-2. General	1-001
1-3. Qualifications of Operators and Maintenance Personnel	1-002
1-4. Safety Practices and Policies.....	1-002
1-5. Pre Start Inspection.....	1-003
1-6. Safety Instructions	1-003
1-7. Starting.....	1-004
1-8. Operating.....	1-004
1-9. Stopping	1-004
1-10. Maintenance.....	1-005
1-11. Transporting the Machine.....	1-006

2. SPECIFICATIONS

1. SPECIFICATION DATA	
1-1. PC600 (Chassis number: 50748-)	2-001
1-2. PC600 (WIDE) (Chassis number: 60101-).....	2-002
2. FUEL AND LUBRICANT	
2-1. Fuel.....	2-003
2-2. Engine Oil/Vibrator Oil	2-003
3. TIGHTENING TORQUE CHART.....	2-004

3. INSPECTION AND MAINTENANCE

1. INSPECTION AND MAINTENANCE	
1-1. Engine.....	3-001
1-2. Compactor Body	3-001
1-3. V-belt	3-001
1-4. Vibrator.....	3-003
1-5. Air Cleaner.....	3-003

4. PARTS CATALOGUE

1. GUIDE FOR USE OF PARTS CATALOGUE.....	4-001
2. FRAME	
2-1. Frame (Chassis number: 50748-).....	4-002
2-2. Frame (Chassis number: 60101-).....	4-006


3. TANK ASSY	4-008
4. VIBRATOR	
4-1. Vibrator (Chassis number: 50748-).....	4-010
4-2. Vibrator (Chassis number: 60101-).....	4-012
5. NAME PLATE	
5-1. Name Plate (Chassis number: 50748-)	4-014
5-2. Name Plate (Chassis number: 60101-)	4-016


SAFETY


1. GENERAL SAFETY

1-1. Understanding the Safety Symbols and Words

The words DANGER, WARNING, and CAUTION are used with the safety-alert symbol. DANGER identifies the most serious hazard. When the symbols DANGER, WARNING and CAUTION are displayed, become alert. Your safety or those around you may be involved. NOTICE is used to provide important information that is not hazard related.

 **DANGER:** Indicates an imminently hazardous situation or condition which if not avoided can result in serious personal injury or death.

 **WARNING:** Indicates a potentially hazardous situation or condition which if not avoided can result in serious personal injury or death.

 **CAUTION:** Indicates a potentially hazardous situation or condition which if not avoided may result in moderate personal injury or damage to the machine or personal property.

(NOTICE): Indicates important information about operation or maintenance of the machine that may cause damage, breakdown, or shortened service life of the machine if you fail to observe or important point to maintain of quality in maintenance works.

★: Indicates standard value to judge whether measured value is good or not.



Items that indicate the weight of a part or equipment and require attention in wire selection and operating posture for slinging operation.



In the assembly operation, tightening torque in locations that require particular attention.

1-2. General

- Operators and maintenance personnel must be alert to recognize and avoid potential hazards. They should also have comprehensive training, the required skills and necessary tools to perform the job safely.
- The machine was built in accordance to the latest safety standards and recognized safety rules. Nevertheless, misuse of the machine may result in risk to life and limb of the user or nearby personnel and may cause damage to the machine or other property.
- The machine must only be used for its intended purpose as described in the Operator's Manual. It must be operated by safety-conscious persons who are fully aware of the risks involved when operating the machine. Any malfunctions especially those affecting the safety of the machine must be corrected immediately.

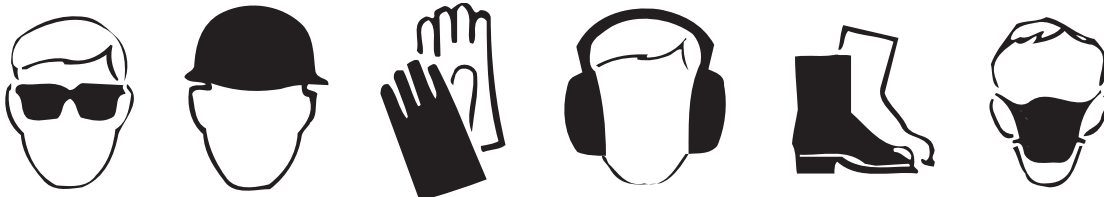
- The machine is designed specifically for the compaction of asphalt or soil road construction materials. Use of the machine for other purposes such as towing other equipment is considered contrary to the designated use. The manufacturer cannot be responsible or held liable for any damage resulting from such use. The risk for such use lies entirely with the user.
- Operating the machine within the limits of its designated use also involves compliance with the inspection and maintenance requirements contained in the Operation and Maintenance Manual.

1-3. Qualifications of Operators and Maintenance Personnel

- Work on the machine must be performed by qualified personnel only. Individual responsibilities of personnel regarding operation, maintenance, repair of the machine must be clearly stated.
- Define the operator's responsibilities; the operator should have authority to refuse instructions that are contrary to safety.
- Do not allow persons being trained to operate or perform maintenance on the machine without constant supervision by an experienced person.
- Work on the electrical system of the machine must be done only by an experienced person or under the guidance of a skilled electrician and according to electrical engineering rules and regulations.
- Work on the frame, brakes, hydraulic and steering systems must be performed by skilled personnel with special knowledge and training for such work.

1-4. Safety Practices and Policies

- Keep the manuals in the container provided on the machine. Manuals must always be available at the site where the machine is being used.
- The operator or user of the machine must be aware of all applicable or legal and mandatory regulations relevant to accident prevention and environmental protection. These regulations may also deal with handling of hazardous substances, the required proper personal safety and protective equipment and traffic or jobsite regulations.
- Machine operating instructions should also be supplemented with detailed instructions pertaining to the specific jobsite or work location.
- Always be sure the persons working on the machine have read the operating instructions and all safety precautions before beginning work. Reading safety instructions after work has already begun is too late.
- Wear close fitting garments and always tie back and secure long hair, also avoid wearing jewelry such as rings. Injury can result from loose clothing, hair or jewelry being caught up in the machinery or rotating parts.
- Use protective equipment as required by the circumstances or by law.



- Observe all safety instructions and warnings attached to the machine.
- Make sure all safety instructions and warnings on the machine are complete and perfectly legible.
- Stop the machine immediately in the event of any malfunction. Report any malfunction immediately to the supervisor or other person of authority.
- Never make any modifications to the machine which might affect safety without the manufacturer's approval.
- Always perform the recommended routine inspections and adjustments according to the prescribed intervals.

1-5. Pre Start Inspection

- Inspect your machine daily. Ensure that the routine maintenance and lubrication are properly performed. Repair or replace any malfunctioning, broken or missing parts before using the machine. Refer to the inspection and maintenance or maintenance schedule in the Operator's Manual.
- Check that all instructions and safety stickers are in place and readable.
- Never fill the fuel tank with the engine running or while near an open flame or while smoking.
- Always clean up any spilled fuel.
- Check for any warning tags placed on the machine, do not operate the machine until all repairs have been made and warning tags have been removed by authorized personnel.
- Know how to shut-down or stop the machine immediately in case of emergency.
- Know the capabilities and limitations of the machine such as speed and gradeability.
- Be aware of the dimensions of the machine such as height, weight especially for transporting.

1-6. Safety Instructions

- Take all necessary precautions to ensure that the machine is used only when in a safe and reliable condition.
- Avoid any operational mode that might compromise safety.
- Operate the machine only if all protective and safety devices are in place and fully functional.

1-7. Starting

- Watch that the warning lights and indicators during start-up and shutdown are working in accordance with operating instructions.
- Watch that no one is in danger before starting and when moving the machine.
- Hold the handle securely with your left hand to fix the machine body and pull the starter knob forcibly with your right hand to start the engine.
- When pulling up the starter knob, pull it from immediately behind the handle to prevent your hand from hitting the handle.

1-8. Operating

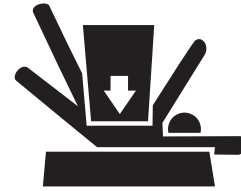
- Always make sure that there are no obstructions or persons in your line of travel before starting the compactor in motion.
- Use caution and be very observant when operating in close quarters and congested areas.
- Do not operate the compactor for driving a pile or on a solid ground exceeding capacity of the machine such as surface paved with asphalt, concrete, cobblestone, and solid rock. Otherwise, this may cause damage to the machine as too much stress is applied to the machine body.
- Do not get your hands off the handle while operating.
- When operating the compactor on a slope, operate it within a gradient of 1/4 (approx. 14 degrees).
- When operating the compactor on a ground surface with a large roughness and a large level difference, or on a steep slope, take care that you will not be injured in your wrist due to overturn or slip of the machine body.
In addition, this may cause earlier damage to the machine as an excessive stress is also applied to the machine body.
- Be sure to stop the engine before leaving the compactor unattended.
- Never allow anyone to stand in the articulation area of the machine when the engine is running.
- Do not attempt to control the compactor travel speed with the throttle control. Maintain engine speed at the full operating RPM.
- Do not run the engine in a closed building for an extended period of time. Exhaust fumes can kill.

1-9. Stopping

- Always park the machine in a safe area on solid and level ground.
- Lock all lockable compartments.

1-10. Maintenance

- In any performing any work concerning the operation, adjustment or modification of the machine or it's safety devices or any work related to maintenance, inspection or repair, always follow the start-up and shut-down procedures in the Operator's Manual and the Maintenance Manual.
- Ensure that the maintenance area is safe and secure.
- If the machine is shut down for maintenance or repair work it must be secured against inadvertent starting by removing the starter key and attaching a warning sign to the starter switch.
- The machine must be parked on stable and level ground.
- Immediately after the engine has stopped, the exhaust system, engine, radiator coolant, engine oil, hydraulic fluid and other lubricants and components will be very hot. Fluids can be under pressure, removing the radiator cap or draining oil or changing filters can cause serious burns. Wait until the machine has cooled down.
- Use care when attaching and securing lifting tackle to individual parts and large assemblies being removed or repositioned for repair purposes to avoid the risk of accident. Use lifting devices that are in perfect condition and of sufficient lifting capacity. Never stand under suspended loads.
- Always use the proper tools and workshop equipment in good condition when performing maintenance or repairs on the machine.
- Clean the machine, especially threaded connections of any traces of oil or fuel before carrying out any maintenance or repairs. Never use aggressive detergents. Use lint free cleaning rags.
- Examine all fuel, lubricant and hydraulic fluid lines and connectors for leaks, loose connections chafe marks or damage after cleaning.
- Repair or replace defective parts immediately.
- Never fill the fuel tank with the engine running, while near an open flame or while smoking. Always clean up any spilled fuel.
- Ensure safe operation, optimum performance of the machine and its warranty by using only genuine SAKAI replacement parts.



- Use only the specified fluids and lubricants. Substitute only products known to be equivalent from reputable manufacturers.
- Disconnect the battery cables when working on the electrical system or when welding on the compactor.
- Be sure the battery area is well ventilated (clear of fumes) should it be necessary to connect a jumper cable or battery charger. Fumes can ignite from a spark and may explode.
- Be sure battery charger is OFF when making connections if charging is required.
- Use only original fuses with the specified rating. Switch off the machine immediately if trouble occurs in the electrical system.
- Work on the electrical system may only be carried out by a qualified electrician or by a specially trained person according to electrical engineering principles.
- Inspect the electrical equipment of the machine at regular intervals. Defects such as loose connections or burnt or scorched wires must be repaired or replaced immediately.
- Do not weld, flame cut or perform grinding on the machine unless expressly authorized, as there may be a risk of fire or explosion. Disconnect the battery when welding on the machine.
- Clean the machine and its surrounding from dust or other flammable substances and make sure the area is adequately ventilated before beginning welding, flame cutting or grinding operations.
- Observe all product safety regulations when handling fuel, oils, grease, engine coolant and other chemical substances. Be careful especially when these items are hot as there is a risk of burning or scalding.
- Operate internal combustion engines and fuel operated heating systems only in adequately ventilated premises. Before starting the engine in an enclosed area, make sure there is sufficient ventilation.



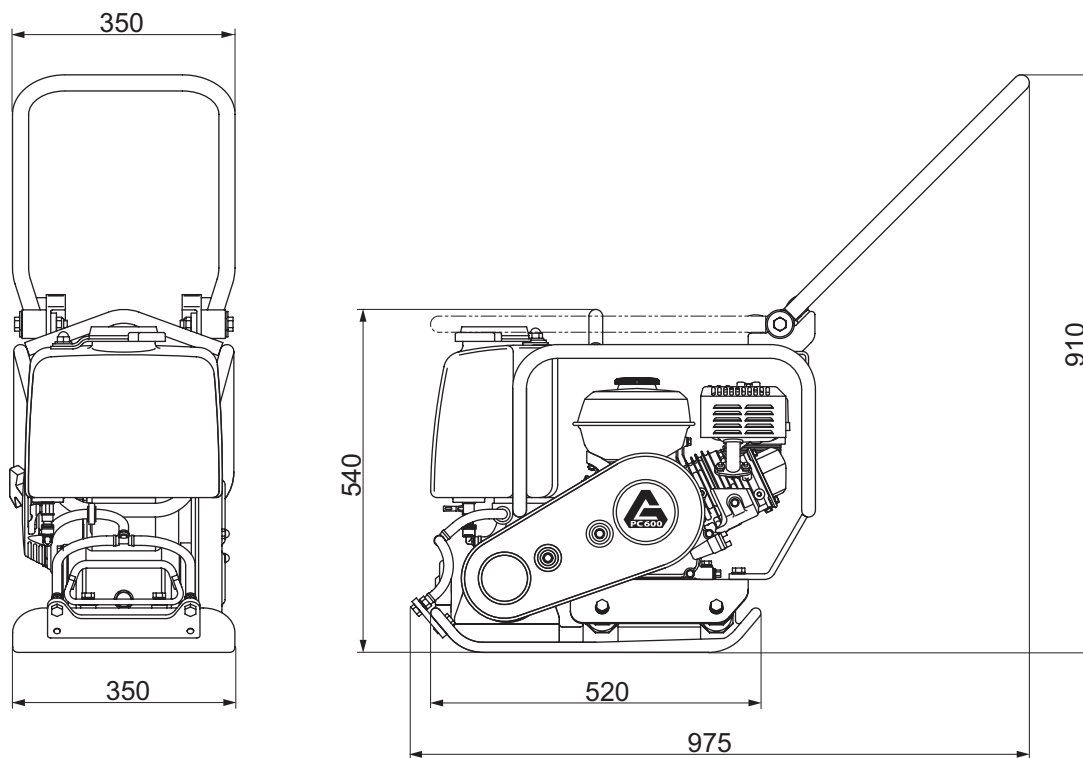
1-11. Transporting the Machine

- Load and unload the machine in/from a transporting vehicle with two persons in order to avoid an accidental drop of the machine.
- Drain fuel from the fuel tank, the carburetor, and the fuel strainer before transporting it on a long distance or on a rough road.

SPECIFICATIONS

1. SPECIFICATION DATA

1-1. PC600 (Chassis number: 50748-)

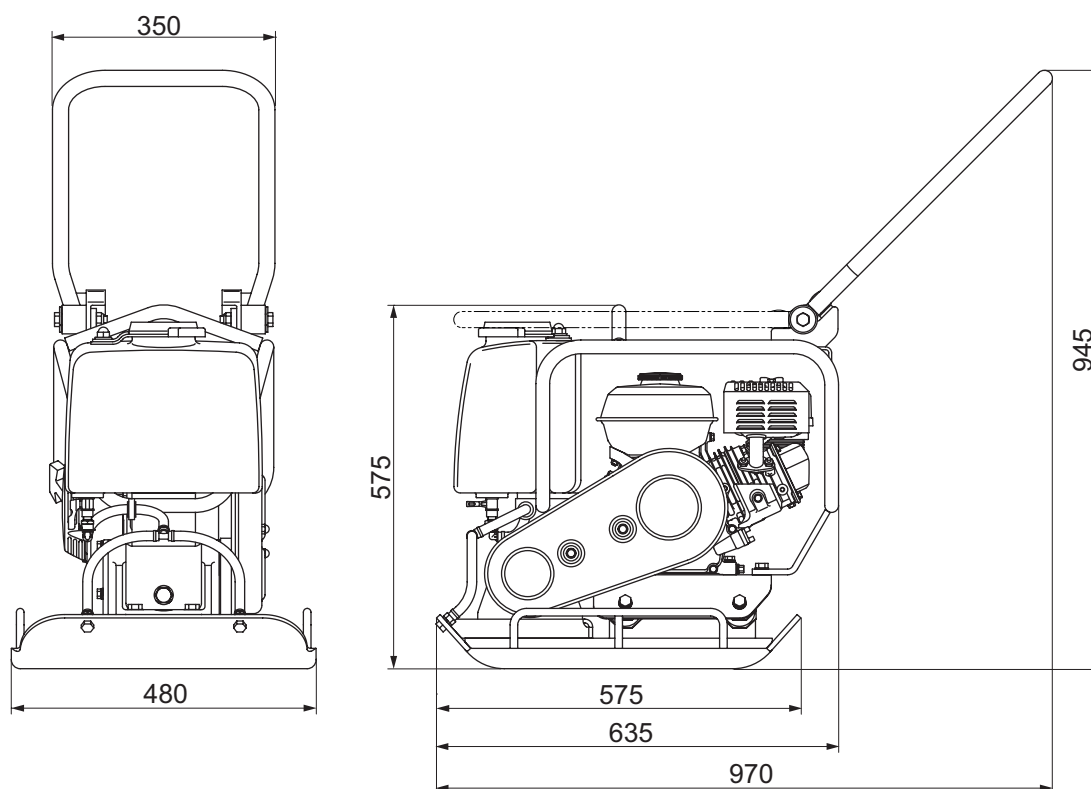


0499-99006-0-10151-A

Model		PC600		
Weight		68 kg	(150 lbs.)	
Dimensions	Overall length	975 mm	(38.5 in.)	
	Overall width	350 mm	(14.0 in.)	
	Overall height	910 mm	(36.0 in.)	
	Vibrating plate (width × length)	350 mm × 520 mm	(14.0 in. × 20.5 in.)	
	Compaction width	350 mm	(14.0 in.)	
Speed		25 to 30 m/min	(82 to 98 ft/min)	
Vibration performance	Frequency	100 Hz		
	Centrifugal force	11.8 kN	(2,645 lbs.)	
Engine	Name			HONDA GX120U1 Gasoline Engine
	Model			Air-cooled, 4-cycle, 25° inclined, 1-cylinder
	Displacement			0.118 L (7.2 cu.in)
	Performance	Continuos rated output		2.1 kW (2.8 HP) at 3,600 min ⁻¹
		Max. output		-
		Max. torque		7.5 N·m (5.5 lbf-ft) at 2,500 min ⁻¹
	Air cleaner			Dry type
Starting system			Recoil starter	
Power line	Transmission			V-belt
Vibrating system	Vibrator			Eccentric shaft type
	Clutch			Centrifugal type

SPECIFICATIONS

1-2. PC600 (WIDE) (Chassis number: 60101-)



0499-99010-0-10189-0

Model		PC600 (WIDE)		
Weight		72 kg	(159 lbs.)	
Dimensions	Overall length	970 mm	(38.5 in.)	
	Overall width	480 mm	(19.0 in.)	
	Overall height	945 mm	(37.5 in.)	
	Vibrating plate (width × length)	480 mm × 575 mm	(19.0 in. × 23.0 in.)	
	Compaction width	480 mm	(19.0 in.)	
Speed		20 to 25 m/min	(66 to 82 ft/min)	
Vibration performance	Frequency	100 Hz		
	Centrifugal force	11.8 kN	(2,645 lbs.)	
Engine	Name			HONDA GX120 Gasoline Engine (EPA Phase3)
	Model			Air-cooled, 4-cycle, 25° inclined, 1-cylinder
	Displacement			0.118 L (7.2 cu.in)
	Performance	Continuos rated output		2.1 kW (2.8 HP) at 3,600 min ⁻¹
		Max. output		2.6 kW (3.5 HP) at 3,600 min ⁻¹
		Max. torque		7.3 N·m (5.4 lbf-ft) at 2,500 min ⁻¹
	Air cleaner			Dry type
Starting system			Recoil starter	
Power line	Transmission			V-belt
Vibrating system	Vibrator			Eccentric shaft type
	Clutch			Centrifugal type

2. FUEL AND LUBRICANT

2-1. Fuel

Fuel to be employed: Regular gasoline for automobile

Fuel tank capacity: 2.5 liters (50748-)

2.0 liters (60101-)

2-2. Engine Oil/Vibrator Oil

Season	Ambient temperature	Viscosity rating (API/SE or higher grade)
Summer	25°C and above	SAE#30
Spring/Autumn	10°C to 25°C	SAE#20 or #30
Winter	-10°C to 10°C	SAE#20
All-year-round	Regardless of temperature	SAE 10W-30

3. TIGHTENING TORQUE CHART

N·m	(lbf·ft)
-----	----------

	Nominal Dia.	Pitch	Strength Classification							
			6.8		8.8		10.9		12.9	
Metric coarse screw	5	0.8	4.9	(3.6)	5.9	(4.4)	7.8	(5.8)	7.8	(5.8)
	6	1.0	7.8	(5.8)	9.8	(7.2)	13	(9.6)	13	(9.6)
	8	1.25	17	(13)	23	(17)	31	(23)	31	(23)
	10	1.5	39	(29)	49	(36)	59	(44)	59	(44)
	12	1.75	69	(51)	78	(58)	108	(80)	108	(80)
	14	2.0	98	(72)	127	(94)	167	(123)	167	(123)
	16	2.0	157	(116)	196	(145)	265	(195)	265	(195)
	18	2.5	196	(145)	245	(181)	343	(253)	343	(253)
	20	2.5	294	(217)	392	(289)	539	(398)	539	(398)
	22	2.5	441	(325)	539	(398)	686	(506)	686	(506)
	24	3.0	539	(398)	637	(470)	883	(651)	883	(651)
	27	3.0	785	(579)	981	(724)	1324	(977)	1324	(977)
30	3.5	1079	(796)	1324	(977)	1765	(1302)	1765	(1302)	
Metric fine screw	10	1.25	39	(29)	49	(36)	69	(51)	69	(51)
	12	1.25	69	(51)	88	(65)	118	(87)	118	(87)
	14	1.5	108	(80)	137	(101)	186	(137)	186	(137)
	16	1.5	167	(123)	206	(152)	284	(209)	284	(209)
	18	1.5	245	(181)	294	(217)	392	(289)	392	(289)
	20	1.5	343	(253)	441	(325)	588	(434)	588	(434)
	22	1.5	490	(361)	588	(434)	785	(579)	785	(579)
	24	2.0	588	(434)	735	(542)	981	(724)	981	(724)
	27	2.0	834	(615)	1030	(760)	1422	(1049)	1422	(1049)
30	2.0	1177	(868)	1422	(1049)	1961	(1446)	1961	(1446)	

INSPECTION AND MAINTENANCE

1. INSPECTION AND MAINTENANCE

1-1. Engine

Refer to a separate Engine Operation Manual for the engine.

1-2. Compactor Body

Wipe off dust, dirt, and oil stuck to the machine to check that it is in good order.

Check the bolts for tightness and check intensively around the engine, the belt cover, the cushion rubber, the control handle, and the sling hook.

1-3. V-belt

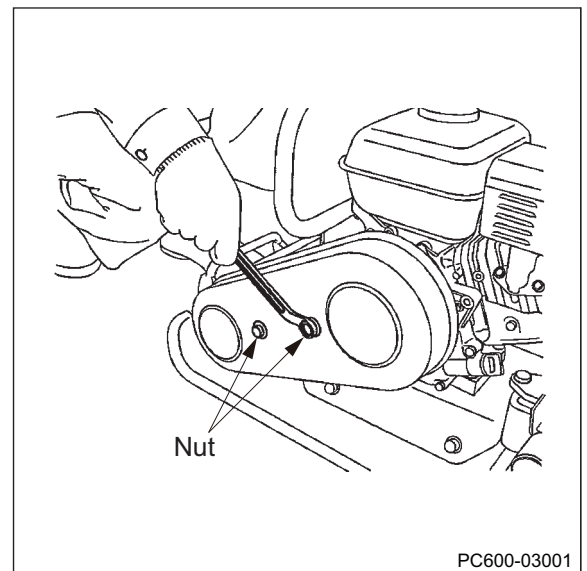
CAUTION

Never attempt to check the V-belt with the engine running. Severe injury can occur if hand get's caught between the V-belt and clutch.

Check the V-belt tension and adjust it if necessary.

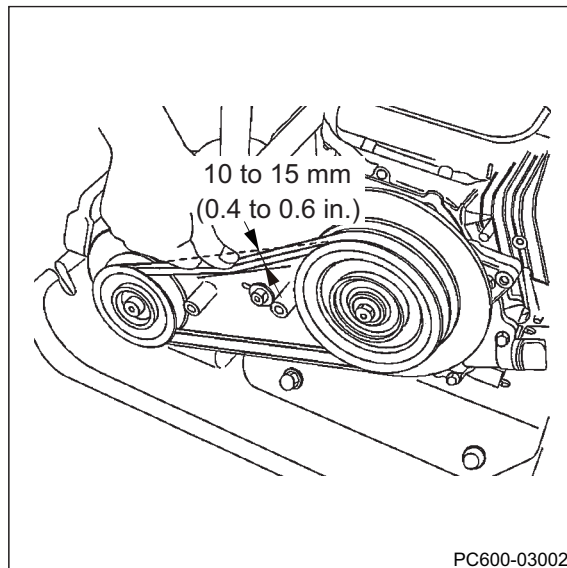
Check:

- 1) Unscerw 2 bolts securing the cover to remove the cover.



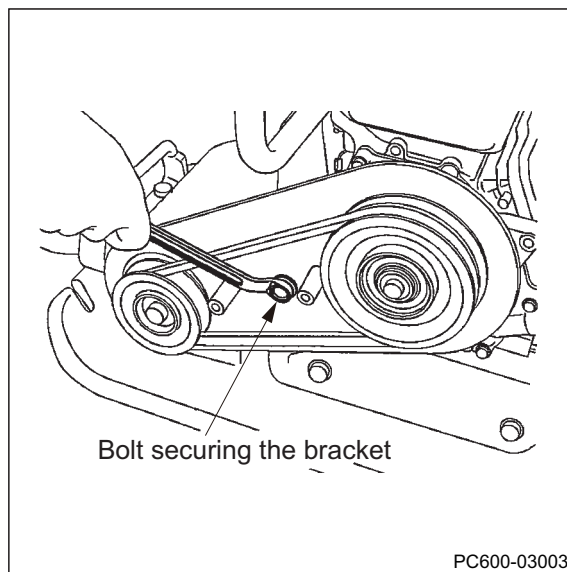
INSPECTION AND MAINTENANCE

- 2) Check the bolt tension of it deflects 10 mm (0.4 in.) to 15 mm (0.6 in.) by pushing it with your thumb at a center point between both shafts. Adjust the tension as necessary.

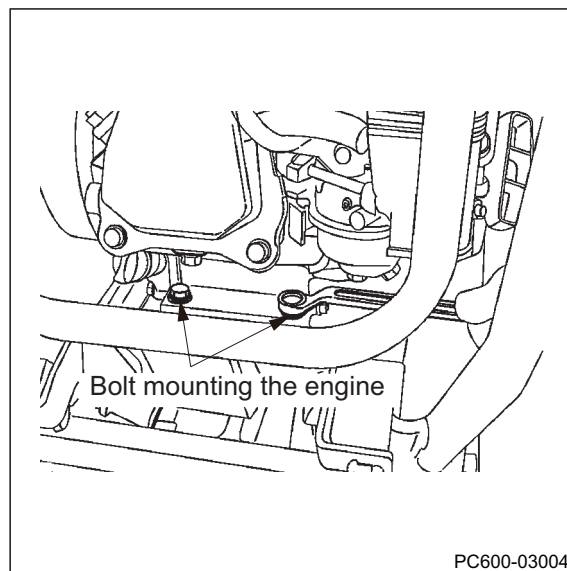


Adjustment:

- 1) Loosen the bolt securing the bracket and 4 bolts mounting the engine to some extent.



- 2) Shift mounting positions of the engine backward so that belt deflects as specified above.
- 3) Re-tighten the bolts.



1-4. Vibrator

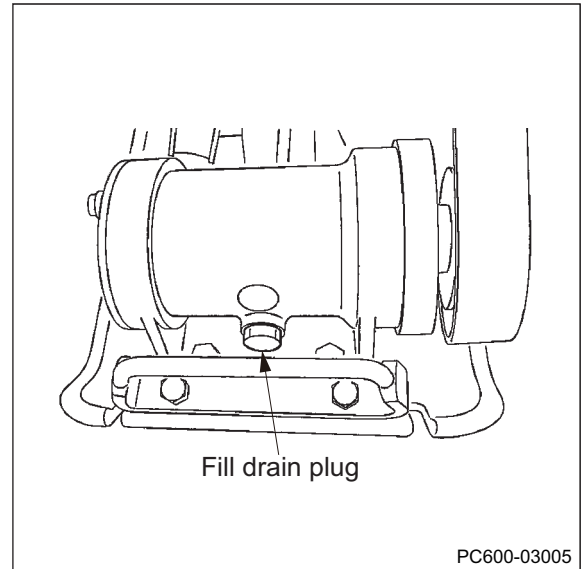
- 1) Stop the engine and keep the compactor level.
- 2) Remove the fill-drain plug to check that the oil spills out of the plug.
- 3) Supply oil if it has been found insufficient.

How to change oil:

- Remove the Fill-drain plug and tilt the compactor body to drain the oil, then fill the new oil. Wipe off oil stuck on the outside of compactor after oil change.
- Change oil at an interval of either one month or 200 operating hours which comes first.

Specified oil quantity (when in replacement):

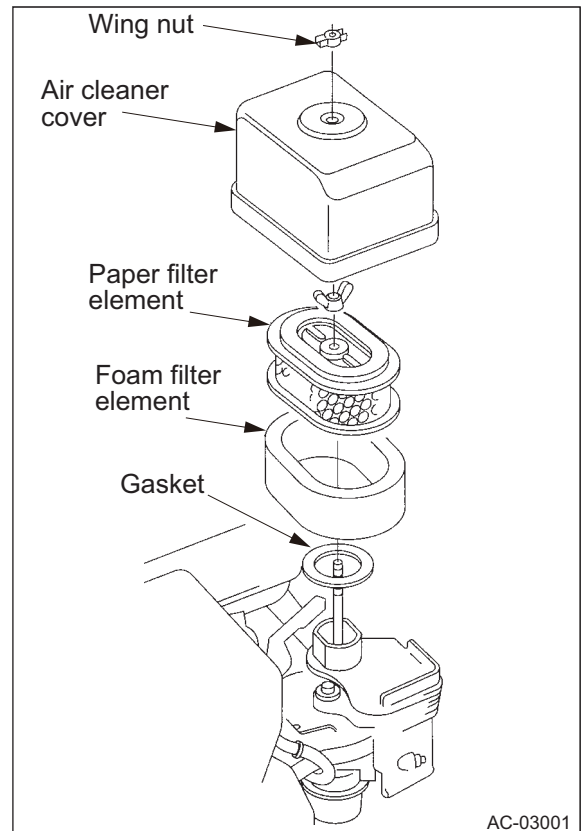
0.14 L (0.04 gal.)



1-5. Air Cleaner

- 1) Remove the wing nut from the air cleaner cover, and remove the cover.
- 2) Remove the wing nut from the air filter, and remove the filter.
- 3) Remove the foam filter from the paper filter.
- 4) Inspect both air filter elements, and replace them if they are damaged. Always replace the paper air filter element at the scheduled interval.
- 5) Clean the air filter elements if they are to be reused.

- Paper air filter element :
 - Tap the filter element several times on a hard surface to remove dirt.
 - Blow compressed air [207 kPa (30 psi)] through the filter element from the inside.
 - Never try to brush off dirt; brushing will force dirt into the fibers.
- Foam air filter element :
 - Clean in warm soapy water, rinse, and allow to dry thoroughly.
 - Clean in nonflammable solvent and allow to dry. Dip the filter element in clean engine oil, then squeeze out all excess oil.

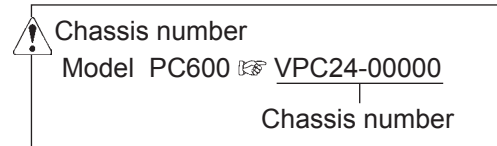


PARTS CATALOGUE

1. GUIDE FOR USE OF PARTS CATALOGUE

1. Quote the following when placing an order for parts.

- (1) Vehicle model
- (2) Chassis number
- (3) Part number
- (4) Part name
- (5) Quantity of required parts.



The vehicle model and chassis number are engraved on the identification plate, and chassis number is also punched on the frame.

2. The chassis number to which parts are applicable are described in the remarks column as follows.

-No.10007 : Applicable up to 10007

No.10008- : Applicable from 10008

3. Each quantity shown in the quantity column is in principle one applied to a unit of vehicle.

However, each quantity as related to ASSEMBLY PARTS indicates one included in a single unit of assembly.

4. The following abbreviated words are used in this parts catalogue.

LH : Lefthand viewed from behind of vehicle.

RH : Righthand viewed from behind of vehicle.

Inc. ○ - ○ : Key number of parts constituting an assembly

OP : Option

N/S : Parts not to be supplied by a single piece

A/S : Parts to be supplied as an assembly composed or a kit of parts

AR : As required

Dom. : For use in Japan

Exp. : For use in countries other than Japan

*SEE PAGE ○○ : See page ○○ for component parts.

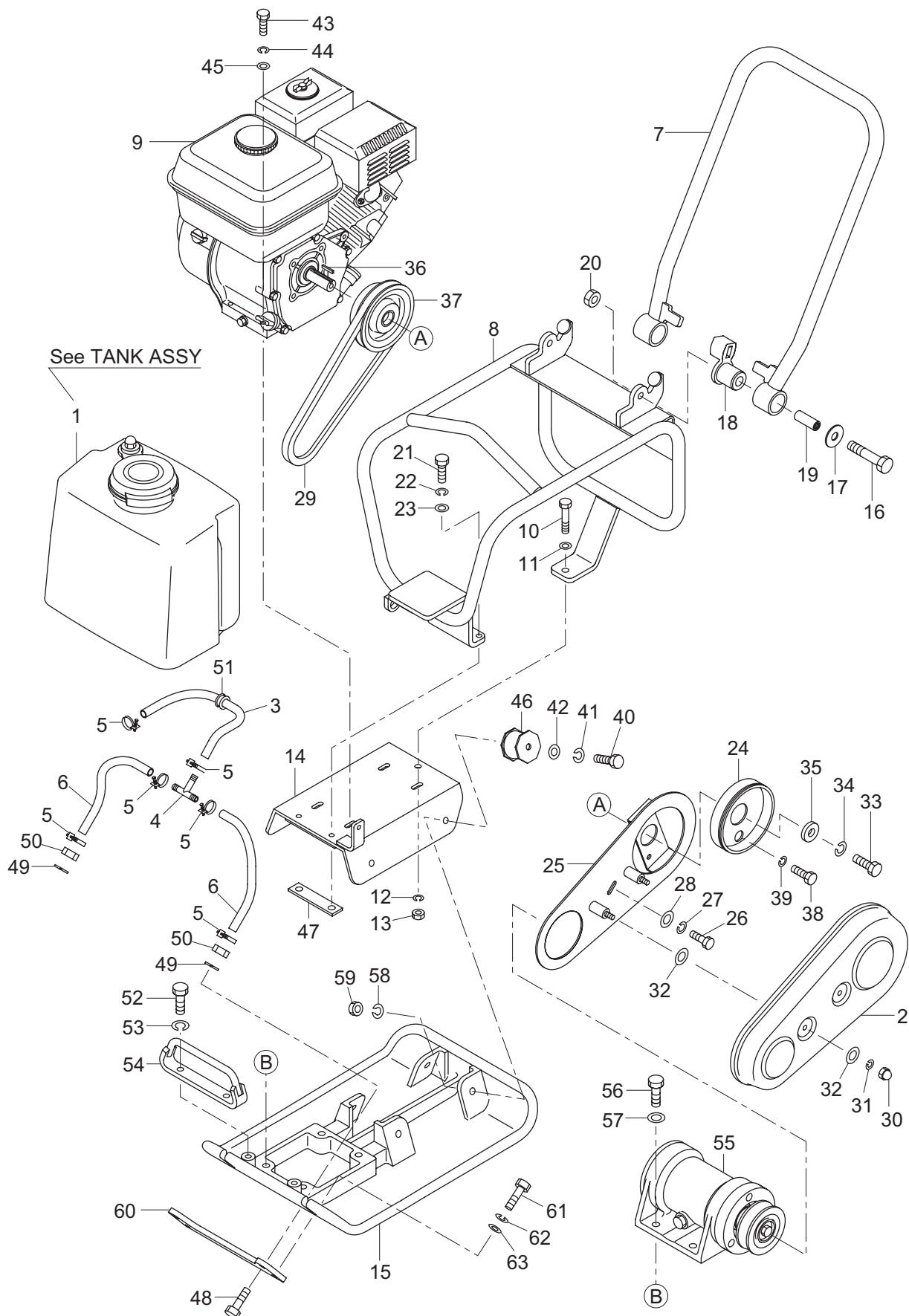
5. Part with "(cf. ○)" in the remarks column indicates that it is supplied as an assembly represented by the key number ○ with which "cf." is attached. Quote the part number that follows the key number ○ when ordering.

6. Part number with a mark "*" indicate that they have been corrected to the ones listed just below them. Quote the renewed part numbers when ordering.

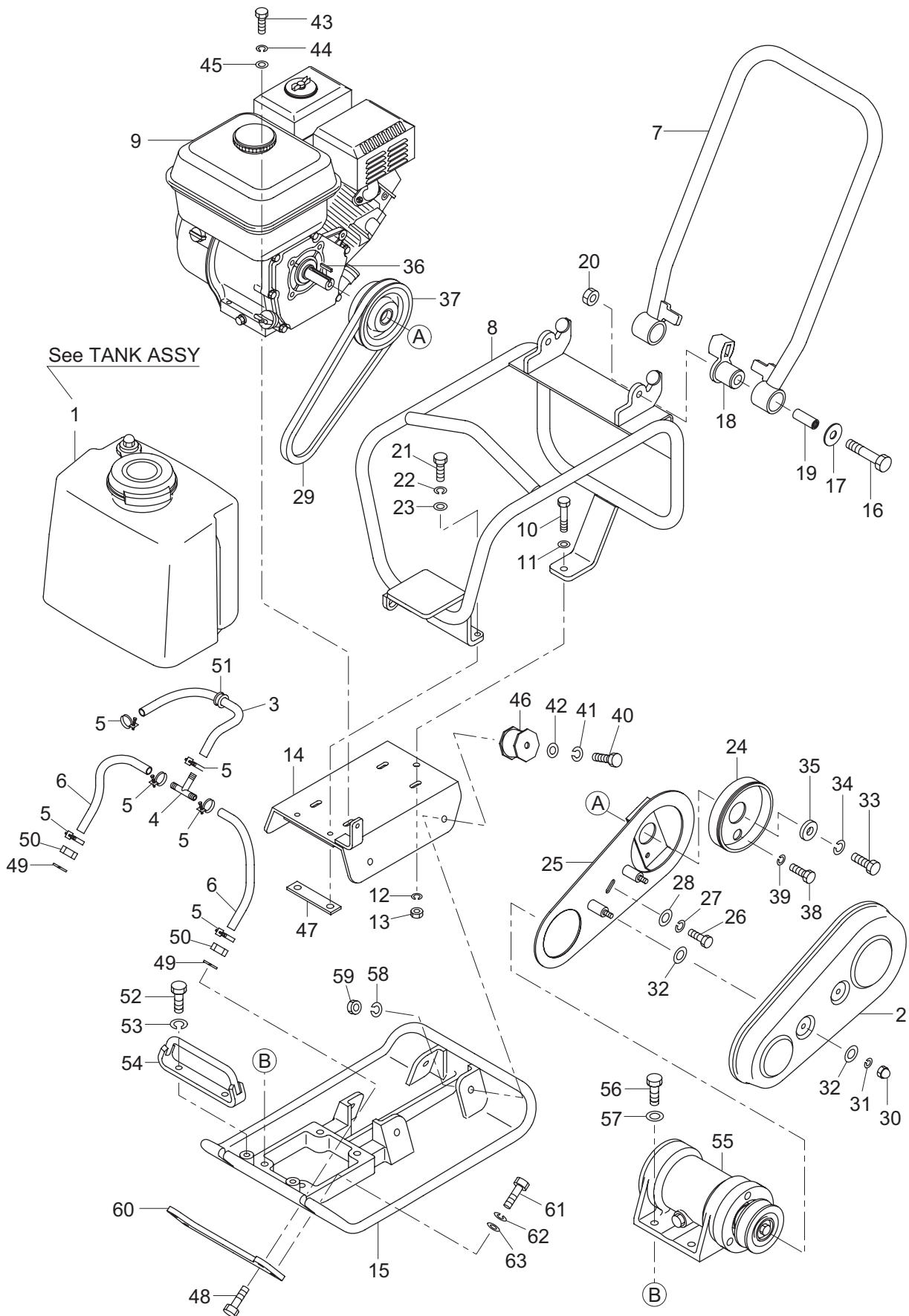
7. Parts are subject to change without notice.

2. FRAME

2-1. Frame (Chassis number: 50748-)

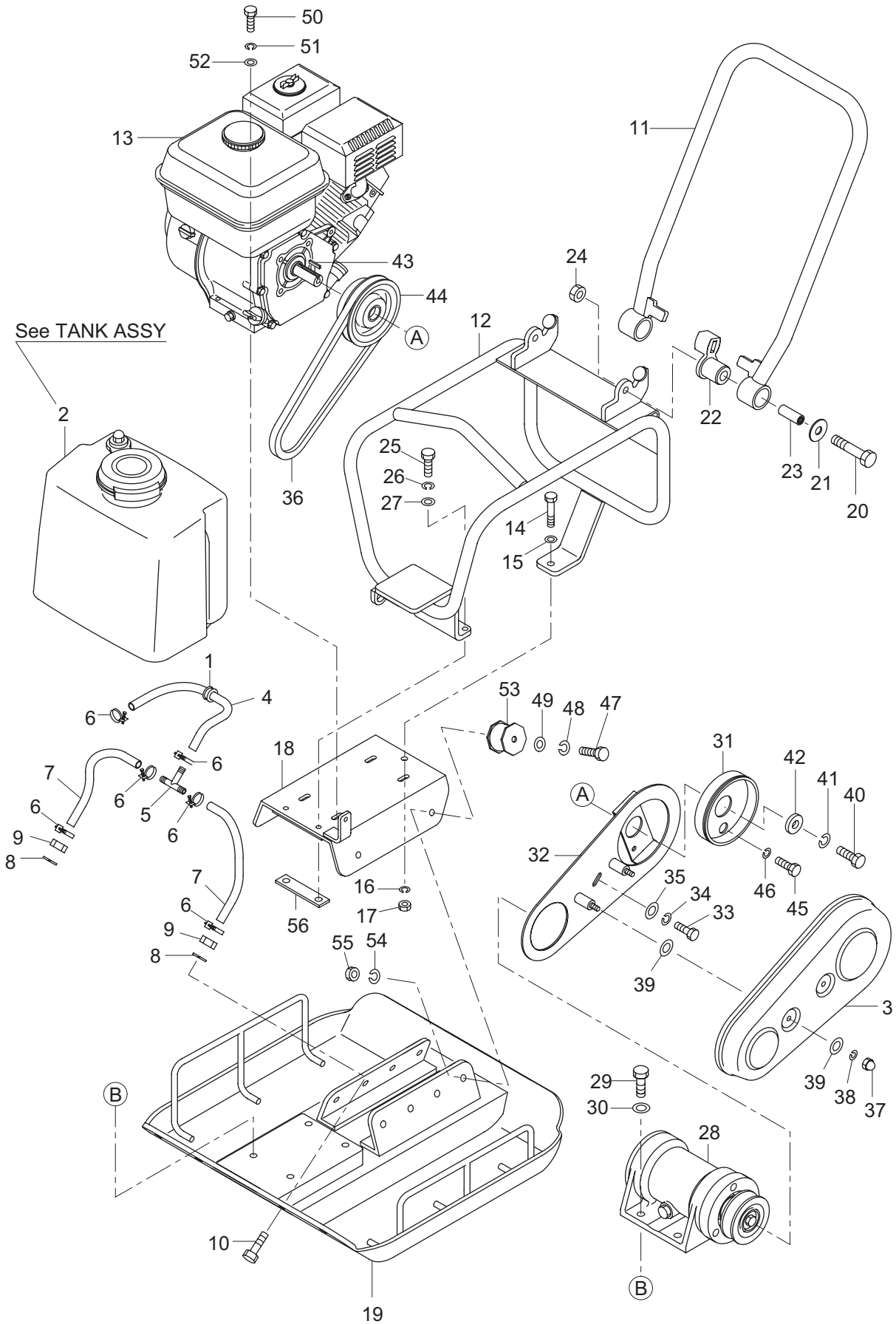


記号 Key No.	部品番号 Parts No.	部品名称	Parts Name	数量 Qty	備考 Remarks
1	0499-47006-1	タンクASSY	TANK ASSY	1	
2	1499-47007-0	カバー	COVER	1	
3	2293-09027-1	ホース	HOSE	1	
4	1496-47049-0	ジョイント	JOINT	1	
5	2898-00103-0	バンド	BAND	6	
6	2293-09018-1	ホース	HOSE	2	
7	1499-47102-0	ハンドル	HANDLE	1	
8	1499-47113-1	ガード	GUARD	1	
9	4030-12000-3	エンジン	ENGINE	1	INC.36 HONDA GX120
10	2100-10030-1	ボルト	BOLT	1	
11	2170-10020-0	ワッシャ	WASHER	1	
12	2171-10025-0	スプリングワッシャ	SPRING WASHER	1	
13	1579-47320-0	ナット	NUT	1	
14	1499-47103-0	ベース	BASE	1	
15	1499-47093-1	プレート	PLATE	1	
16	2100-12070-1	ボルト	BOLT	2	
17	2170-12030-1	ワッシャ	WASHER	2	
18	1499-47014-0	ダンパ	DAMPER	2	
19	1499-47015-0	カラー	COLLAR	2	
20	1579-47290-0	ナット	NUT	2	
21	2100-08025-1	ボルト	BOLT	2	
22	2171-08020-0	スプリングワッシャ	SPRING WASHER	2	
23	2170-08016-0	ワッシャ	WASHER	2	
24	1499-47009-0	カバー	COVER	1	
25	1499-47052-0	ブラケット	BRACKET	1	
26	2100-08020-1	ボルト	BOLT	1	
27	2171-08020-0	スプリングワッシャ	SPRING WASHER	1	
28	2170-08020-1	ワッシャ	WASHER	1	
29	1499-47010-0	Vベルト	V-BELT	1	
30	3120-40014-0	ナット	BOLT	2	
31	2171-08020-0	スプリングワッシャ	SPRING WASHER	2	
32	2170-08020-1	ワッシャ	WASHER	4	
33	2100-08020-1	ボルト	BOLT	1	
34	2171-08020-0	スプリングワッシャ	SPRING WASHER	1	
35	3931-00281-0	ワッシャ	WASHER	1	
36	2196-05036-1	キー	SUNK KEY	1	
37	4418-72000-0	クラッチ	CLUTCH	1	
38	2100-08020-1	ボルト	BOLT	2	
39	2171-08020-0	スプリングワッシャ	SPRING WASHER	2	
40	2100-10020-1	ボルト	BOLT	4	
41	2171-10025-0	スプリングワッシャ	SPRING WASHER	4	
42	2170-10020-0	ワッシャ	WASHER	4	
43	2100-08040-1	ボルト	BOLT	4	
44	2171-08020-0	スプリングワッシャ	SPRING WASHER	4	
45	2170-08016-0	ワッシャ	WASHER	4	
46	1499-47037-1	ダンパ	DAMPER	4	
47	1492-47018-0	ベース	BASE	2	
48	1496-47069-0	ボルト	BOLT	2	NOZZLE
49	2171-10025-0	スプリングワッシャ	SPRING WASHER	2	
50	2120-10080-0	ナット	NUT	2	
51	1499-47112-0	グロメット	GROMMET	1	
52	2100-10025-1	ボルト	BOLT	2	
53	2171-10025-0	スプリングワッシャ	SPRING WASHER	2	
54	1499-47017-0	フック	HOOK	1	
55	0499-47004-1	起振体	VIBRATOR	1	-No.50827
55	0499-47004-2	起振体	VIBRATOR	1	No.50828-
56	2100-12030-3	ボルト	BOLT	4	
57	2170-12032-2	ワッシャ	NUT	4	



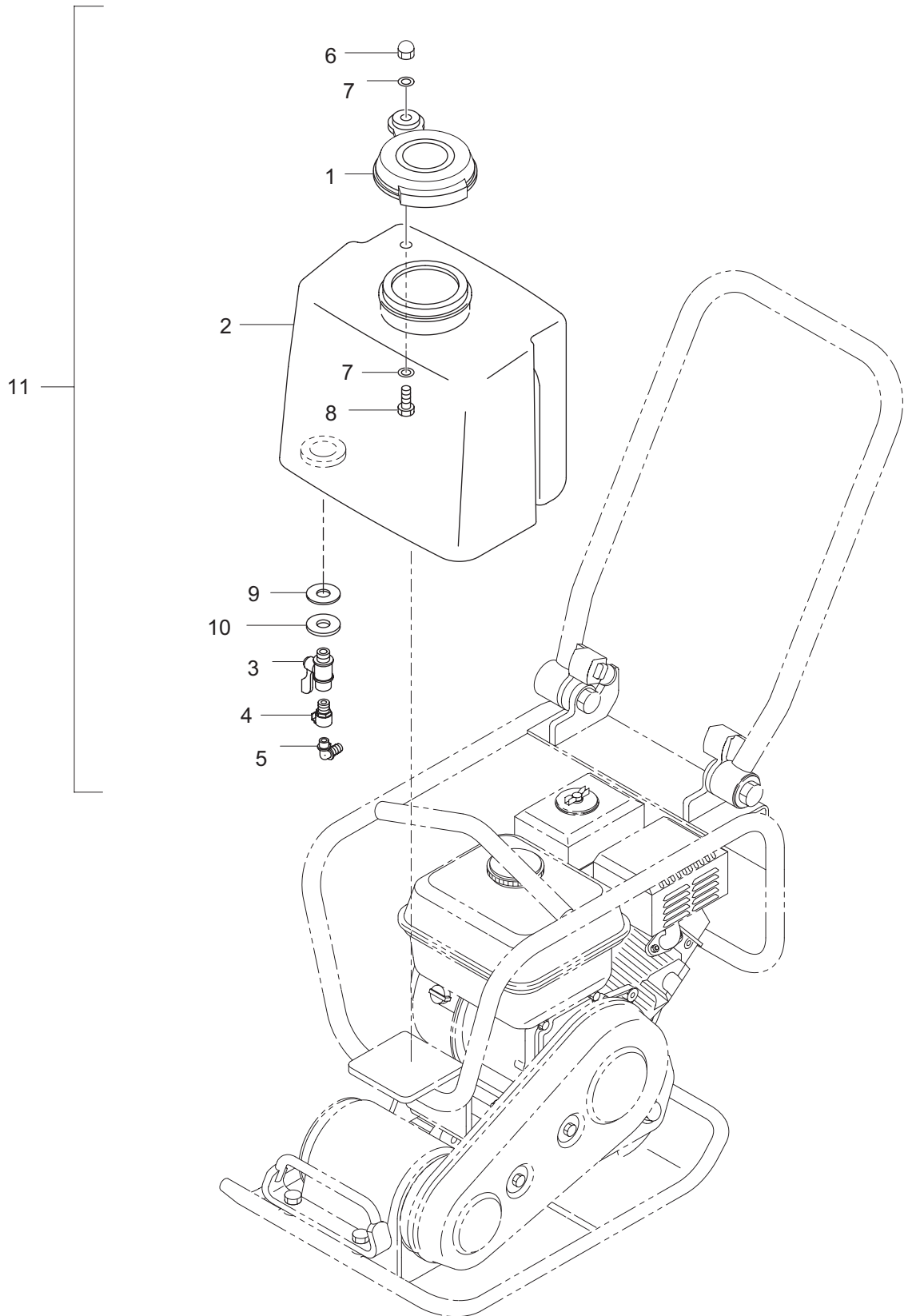
記号 Key No.	部品番号 Parts No.	部品名称	Parts Name	数量 Q'ty	備考 Remarks
58	2171-10025-0	スプリングワッシャ	SPRING WASHER	4	
59	2120-10080-0	ナット	NUT	4	
60	1499-47116-0	プレート	PLATE	1	
61	2100-10025-1	ボルト	BOLT	2	
62	2171-10025-0	スプリングワッシャ	SPRING WASHER	2	
63	2170-10020-0	ワッシャ	WASHER	2	

2-2. Frame (Chassis number: 60101-)



記号 Key No.	部品番号 Parts No.	部品名称	Parts Name	数量 Q'ty	備考 Remarks
1	1499-47112-0	グロメット	GROMMET	1	
2	0499-47006-1	タンクASSY	TANK ASSY	1	
3	1499-47007-0	カバー	COVER	1	
4	2293-09024-1	ホース	HOSE	1	
5	1496-47049-0	ジョイント	JOINT	1	
6	2898-00103-0	バンド	BAND	6	
7	2293-09022-1	ホース	HOSE	2	
8	2171-10025-0	スプリングワッシャ	SPRING WASHER	2	
9	2120-10080-0	ナット	NUT	2	
10	1496-47069-0	ボルト	BOLT	2	NOZZLE
11	1499-47102-0	ハンドル	HANDLE	1	
12	1499-47113-1	ガード	GUARD	1	
13	4030-12000-3	エンジン	ENGINE	1	INC.43 HONDA GX120
14	2100-10030-1	ボルト	BOLT	1	
15	2170-10020-0	ワッシャ	WASHER	1	
16	2171-10025-0	スプリングワッシャ	SPRING WASHER	1	
17	1579-47320-0	ナット	NUT	1	
18	1499-47103-0	ベース	BASE	1	
19	1499-47129-0	プレート	PLATE	1	
20	2100-12070-1	ボルト	BOLT	2	
21	2170-12030-1	ワッシャ	WASHER	2	
22	1499-47014-0	ダンパ	DAMPER	2	
23	1499-47015-0	カラー	COLLAR	2	
24	1579-47290-0	ナット	NUT	2	
25	2100-08025-1	ボルト	BOLT	2	
26	2171-08020-0	スプリングワッシャ	SPRING WASHER	2	
27	2170-08016-0	ワッシャ	WASHER	2	
28	0499-47004-2	起振体	VIBRATOR	1	
29	2100-12030-3	ボルト	BOLT	4	
30	2170-12032-2	ワッシャ	NUT	4	
31	1499-47009-0	カバー	COVER	1	
32	1499-47052-0	ブラケット	BRACKET	1	
33	2100-08020-1	ボルト	BOLT	1	
34	2171-08020-0	スプリングワッシャ	SPRING WASHER	1	
35	2170-08020-1	ワッシャ	WASHER	1	
36	1499-47010-0	Vベルト	V-BELT	1	
37	3120-40014-0	ナット	BOLT	2	
38	2171-08020-0	スプリングワッシャ	SPRING WASHER	2	
39	2170-08020-1	ワッシャ	WASHER	4	

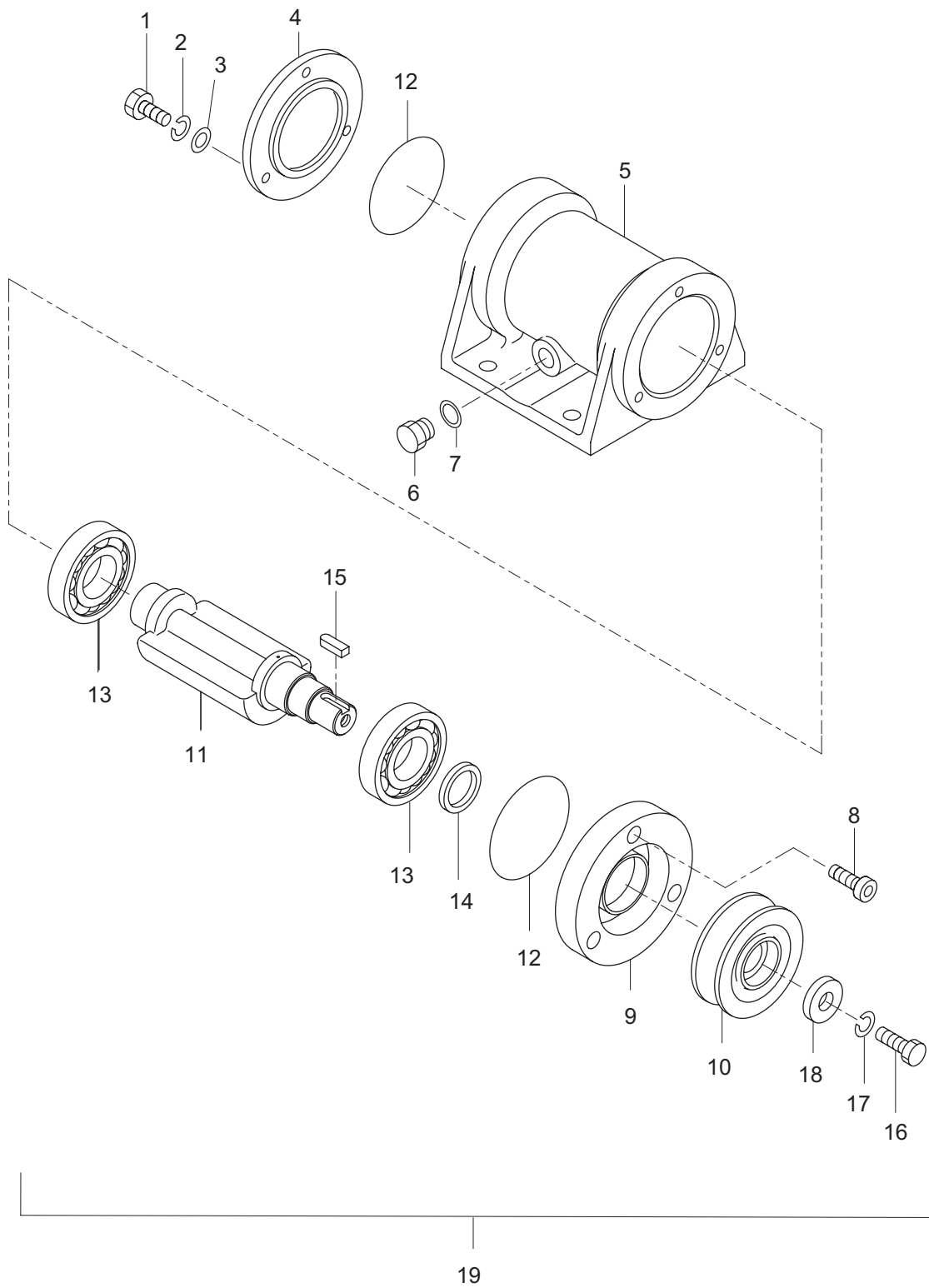
3. TANK ASSY



記号 Key No.	部品番号 Parts No.	部品名称	Parts Name	数量 Q'ty	備考 Remarks
1	1586-75004-0	キャップ	CAP	1	
2	1493-47555-0	タンク	TANK	1	
3	1499-47108-0	コック	COCK	1	
4	1499-47107-1	ソケット	SOCKET	1	
5	1499-47106-0	プラグ	PLUG	1	
6	1586-75039-0	ナット	NUT	1	
7	3931-00241-0	ワッシャ	WASHER	2	
8	3100-11180-0	ボルト	BOLT	1	
9	1492-47038-0	パッキン	PACKING	1	
10	1492-47039-0	ワッシャ	WASHER	1	
11	0499-47006-1	タンクASSY	TANK ASSY	1	INC.1-10

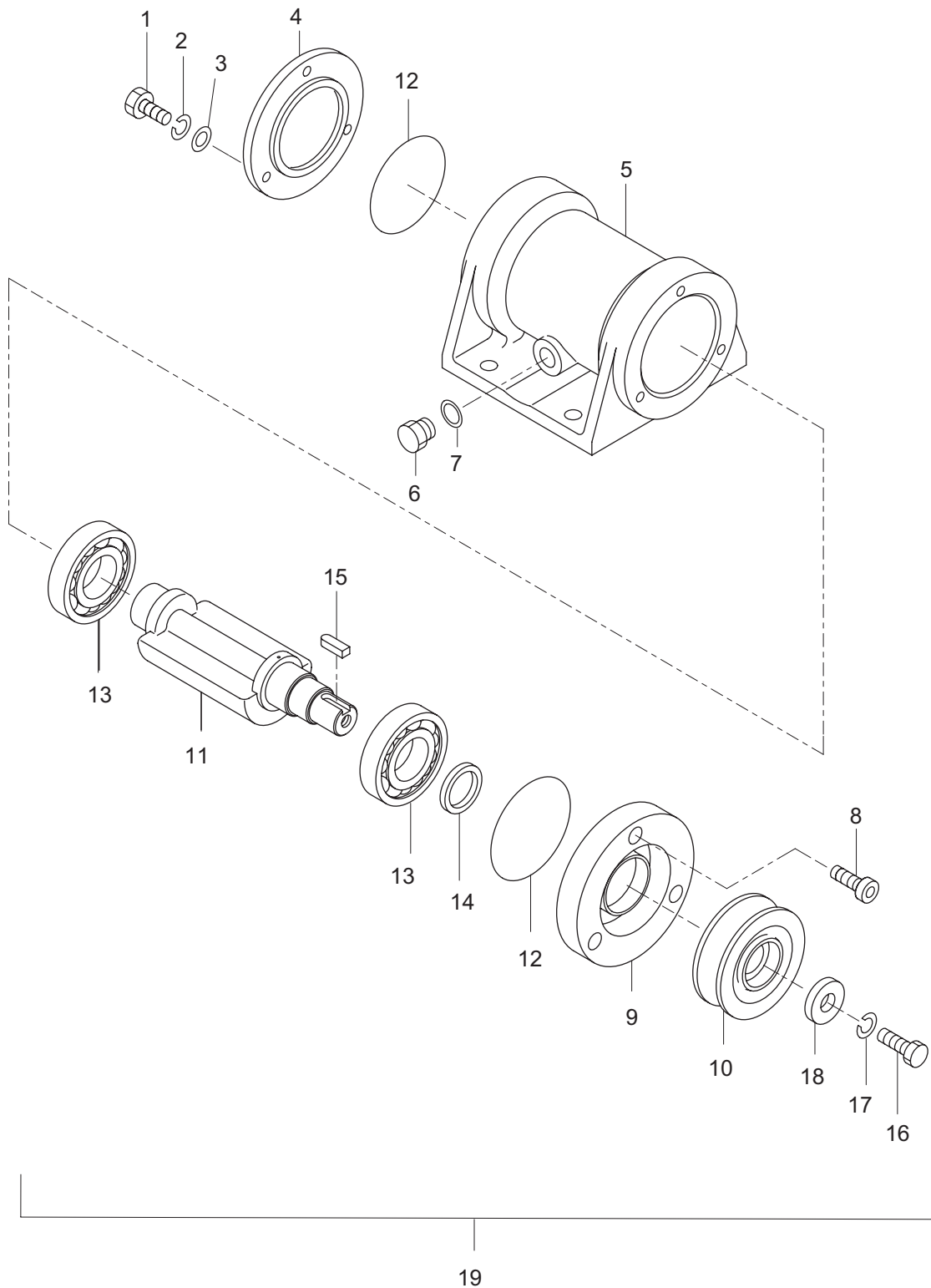
4. VIBRATOR

4-1. Vibrator (Chassis number: 50748-)



記号 Key No.	部品番号 Parts No.	部品名称	Parts Name	数量 Q'ty	備考 Remarks
1	2100-08030-1	ボルト	BOLT	3	
2	2171-08020-0	スプリングワッシャ	SPRING WASHER	3	
3	2170-08016-0	ワッシャ	WASHER	3	
4	1499-47095-0	カバー	COVER	1	
5	1499-47094-1	ケース	CASE	1	
6	1462-47065-1	プラグ	PLUG	1	
7	1579-47030-1	パッキン	PACKING	1	
8	2107-08025-3	ボルト	BOLT	3	
9	1499-47096-0	リテーナ	RETAINER	1	-No.50827
9	1499-47120-0	リテーナ	RETAINER	1	No.50828-
10	1499-47006-0	プーリ	PULLEY	1	
11	1499-47005-1	ヘンシンジク	ECCENTRIC SHAFT	1	-No.50827
11	1499-47121-0	シャフト	SHAFT	1	No.50828-
12	2633-00800-0	Oリング	O-RING	2	
13	3500-01028-0	ボールベアリング	BALL BEARING	2	
14	2602-01679-0	オイルシール	OIL SEAL	1	-No.50827
14	2602-01894-0	オイルシール	OIL SEAL	1	No.50828-
15	2196-08025-1	キー	SUNK KEY	1	
16	2100-10020-1	ボルト	BOLT	1	
17	2171-10025-0	スプリングワッシャ	SPRING WASHER	1	
18	3931-00328-0	ワッシャ	WASHER	1	
19	0499-47004-1	起振体	VIBRATOR	1	INC.1-18 -No.50827
19	0499-47004-2	起振体	VIBRATOR	1	INC.1-18 No.50828-

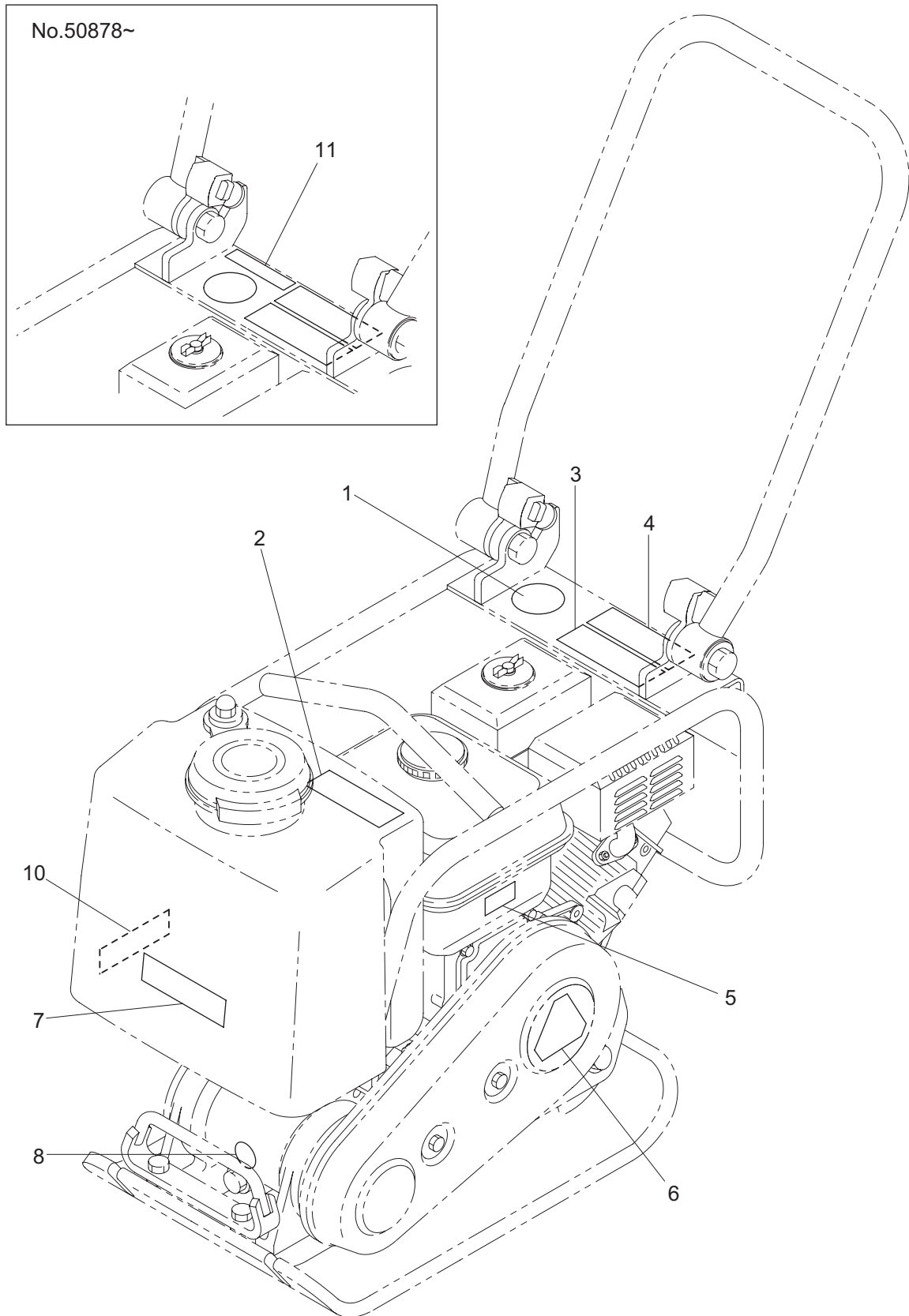
4-2. Vibrator (Chassis number: 60101-)



記号 Key No.	部品番号 Parts No.	部品名称	Parts Name	数量 Q'ty	備考 Remarks
1	2100-08030-1	ボルト	BOLT	3	
2	2171-08020-0	スプリングワッシャ	SPRING WASHER	3	
3	2170-08016-0	ワッシャ	WASHER	3	
4	1499-47095-0	カバー	COVER	1	
5	1499-47094-1	ケース	CASE	1	
6	1462-47065-1	プラグ	PLUG	1	
7	1579-47030-1	パッキン	PACKING	1	
8	2107-08025-3	ボルト	BOLT	3	
9	1499-47120-0	リテーナ	RETAINER	1	
10	1499-47006-0	プーリ	PULLEY	1	
11	1499-47121-0	シャフト	SHAFT	1	
12	2633-00800-0	Oリング	O-RING	2	
13	3500-01028-0	ボールベアリング	BALL BEARING	2	
14	2602-01894-0	オイルシール	OIL SEAL	1	
15	2196-08025-1	キー	SUNK KEY	1	
16	2100-10020-1	ボルト	BOLT	1	
17	2171-10025-0	スプリングワッシャ	SPRING WASHER	1	
18	3931-00328-0	ワッシャ	WASHER	1	
19	0499-47004-2	起振体	VIBRATOR	1	

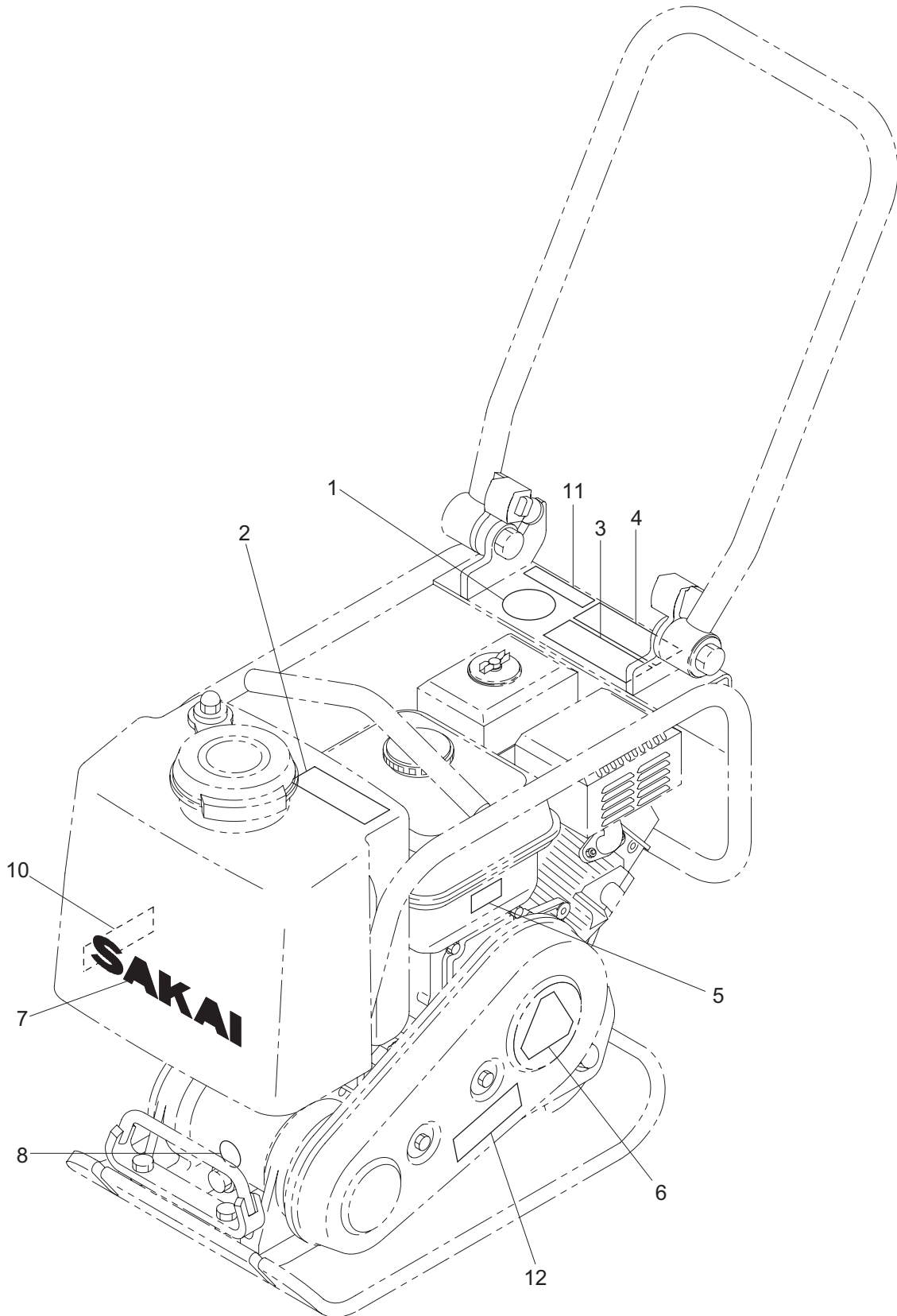
5. NAME PLATE

5-1. Name Plate (Chassis number: 50748-)



記号 Key No.	部品番号 Parts No.	部品名称	Parts Name	数量 Q'ty	備考 Remarks
1	3998-06140-0	デカール	DECAL	1	NOTICE
2	3998-14449-1	デカール	DECAL	1	WATER
3	3998-16490-0	デカール	DECAL	1	DANGER
4	3998-16491-2	デカール	DECAL	1	WARNING
5	1499-19001-1	デカール	DECAL	1	V-BELT
6	1499-19007-0	デカール	DECAL	1	PC600
7	3998-07159-0	デカール	DECAL	1	SAKAI
8	1579-47510-1	デカール	DECAL	1	OIL
10	1499-19008-0	デカール	DECAL	1	COCK
11	1360-19009-0	デカール	DECAL	1	OIL CHECK No.50878-

5-2. Name Plate (Chassis number: 60101-)



記号 Key No.	部品番号 Parts No.	部品名称	Parts Name	数量 Q'ty	備考 Remarks
1	3998-06140-0	デカール	DECAL	1	NOTICE
2	3998-14449-1	デカール	DECAL	1	WATER
3	3998-16490-0	デカール	DECAL	1	DANGER
4	3998-16491-2	デカール	DECAL	1	WARNING
5	1499-19001-1	デカール	DECAL	1	V-BELT
6	1499-19007-0	デカール	DECAL	1	PC600
7	1499-19010-0	デカール	DECAL	1	SAKAI
8	1579-47510-1	デカール	DECAL	1	OIL
10	1499-19008-0	デカール	DECAL	1	COCK
11	1360-19009-0	デカール	DECAL	1	OIL CHECK
12	1499-19009-0	デカール	DECAL	1	WIDE

PC600
SHOP MANUAL
SAKAI HEAVY INDUSTRIES, LTD.

Head office: Seiwa Bldg., 4-8, Shibadaimon 1-chome,
Minato-ku, Tokyo, Japan

Telephone: +81-3-3434-3401

Global Service Division: 2500 Takayanagi, Kuki-shi, Saitama, Japan

Telephone: +81-480-52-1111

© 2017 SAKAI HEAVY INDUSTRIES, LTD. All Rights Reserved.

Printed in Japan 2017.02.00 © H.S
0499-99008-0-30173-A