

# **PC800**

# **SHOP MANUAL**

**SAKAI®**

3498-64964-0



# Introduction

This manual provides important information to familiarize you with safe operating and maintenance procedures for your SAKAI product. Even though you may be familiar with similar equipment you must read and understand this manual before operating or servicing this unit.

Safety is everyone's business and it is one of your primary concerns. Knowing the guidelines presented in this manual will help provide for your safety, for the safety of those around you and for the proper operation and maintenance of the machine. Improper operation is dangerous and can result in injury or death.

Sakai Heavy Industries cannot foresee all possible circumstances or varying conditions to which the operator, serviceman or machine may be exposed to that might lead to a potential hazard. Therefore, the warnings and cautions listed in this manual and those placed on the machine are not intended to be all inclusive and liability for personal injury or damage to equipment or property cannot be assumed.

All information, specifications and illustrations in this publication are based on the product information available at the time that the publication was written. The contents may change without prior notice due to modifications of the model.

Refer to the engine manufacture's shop manual for data relative to engine maintenance and repairing.



# CONTENTS

## 1. SAFETY

### 1. GENERAL SAFETY

1-1. Understanding the Safety Symbols and Words .....	1-001
1-2. General .....	1-001
1-3. Qualifications of Operators and Maintenance Personnel .....	1-002
1-4. Safety Practices and Policies .....	1-002
1-5. Pre Start Inspection .....	1-003
1-6. Safety Instructions .....	1-003
1-7. Starting .....	1-004
1-8. Operating .....	1-004
1-9. Stopping .....	1-004
1-10. Maintenance .....	1-005
1-11. Transporting the Machine .....	1-006

## 2. SPECIFICATIONS

1. SPECIFICATION DATA .....	2-001
2. FUEL AND LUBRICANT	
2-1. Fuel .....	2-002
2-2. Engine Oil/Vibrator Oil .....	2-002
3. TIGHTENING TORQUE CHART .....	2-003

## 3. INSPECTION AND MAINTENANCE

### 1. INSPECTION AND MAINTENANCE

1-1. Engine .....	3-001
1-2. Compactor Body .....	3-001
1-3. V-belt .....	3-001
1-4. Vibrator .....	3-003
1-5. Air Cleaner .....	3-003

## 4. PARTS CATALOGUE

1. GUIDE FOR USE OF PARTS CATALOGUE .....	4-001
2. FRAME .....	4-002
3. VIBRATOR .....	4-004
4. NAME PLATE .....	4-006
5. SPRINKLER SYSTEM .....	4-008
6. CARRIER (OPTION) .....	4-010



---

---

# **SAFETY**

---

---








# 1. GENERAL SAFETY

## 1-1. Understanding the Safety Symbols and Words

The words DANGER, WARNING, and CAUTION are used with the safety-alert symbol. DANGER identifies the most serious hazard. When the symbols DANGER, WARNING and CAUTION are displayed, become alert. Your safety or those around you may be involved. NOTICE is used to provide important information that is not hazard related.

 **DANGER:** Indicates an imminently hazardous situation or condition which if not avoided can result in serious personal injury or death.

 **WARNING:** Indicates a potentially hazardous situation or condition which if not avoided can result in serious personal injury or death.

 **CAUTION:** Indicates a potentially hazardous situation or condition which if not avoided may result in moderate personal injury or damage to the machine or personal property.

(NOTICE): Indicates important information about operation or maintenance of the machine that may cause damage, breakdown, or shortened service life of the machine if you fail to observe or important point to maintain of quality in maintenance works.

★: Indicates standard value to judge whether measured value is good or not.



Items that indicate the weight of a part or equipment and require attention in wire selection and operating posture for slinging operation.



In the assembly operation, tightening torque in locations that require particular attention.

## 1-2. General

- Operators and maintenance personnel must be alert to recognize and avoid potential hazards. They should also have comprehensive training, the required skills and necessary tools to perform the job safely.
- The machine was built in accordance to the latest safety standards and recognized safety rules. Nevertheless, misuse of the machine may result in risk to life and limb of the user or nearby personnel and may cause damage to the machine or other property.
- The machine must only be used for its intended purpose as described in the Operator's Manual. It must be operated by safety-conscious persons who are fully aware of the risks involved when operating the machine. Any malfunctions especially those affecting the safety of the machine must be corrected immediately.

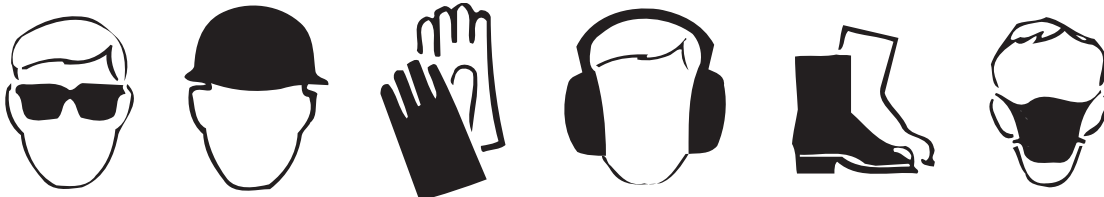
- The machine is designed specifically for the compaction of asphalt or soil road construction materials. Use of the machine for other purposes such as towing other equipment is considered contrary to the designated use. The manufacturer cannot be responsible or held liable for any damage resulting from such use. The risk for such use lies entirely with the user.
- Operating the machine within the limits of its designated use also involves compliance with the inspection and maintenance requirements contained in the Operation and Maintenance Manual.

### 1-3. Qualifications of Operators and Maintenance Personnel

- Work on the machine must be performed by qualified personnel only. Individual responsibilities of personnel regarding operation, maintenance, repair of the machine must be clearly stated.
- Define the operator's responsibilities; the operator should have authority to refuse instructions that are contrary to safety.
- Do not allow persons being trained to operate or perform maintenance on the machine without constant supervision by an experienced person.
- Work on the electrical system of the machine must be done only by an experienced person or under the guidance of a skilled electrician and according to electrical engineering rules and regulations.
- Work on the frame, brakes, hydraulic and steering systems must be performed by skilled personnel with special knowledge and training for such work.

### 1-4. Safety Practices and Policies

- Keep the manuals in the container provided on the machine. Manuals must always be available at the site where the machine is being used.
- The operator or user of the machine must be aware of all applicable or legal and mandatory regulations relevant to accident prevention and environmental protection. These regulations may also deal with handling of hazardous substances, the required proper personal safety and protective equipment and traffic or jobsite regulations.
- Machine operating instructions should also be supplemented with detailed instructions pertaining to the specific jobsite or work location.
- Always be sure the persons working on the machine have read the operating instructions and all safety precautions before beginning work. Reading safety instructions after work has already begun is too late.
- Wear close fitting garments and always tie back and secure long hair, also avoid wearing jewelry such as rings. Injury can result from loose clothing, hair or jewelry being caught up in the machinery or rotating parts.
- Use protective equipment as required by the circumstances or by law.



- Observe all safety instructions and warnings attached to the machine.
- Make sure all safety instructions and warnings on the machine are complete and perfectly legible.
- Stop the machine immediately in the event of any malfunction. Report any malfunction immediately to the supervisor or other person of authority.
- Never make any modifications to the machine which might affect safety without the manufacturer's approval.
- Always perform the recommended routine inspections and adjustments according to the prescribed intervals.

### **1-5. Pre Start Inspection**

- Inspect your machine daily. Ensure that the routine maintenance and lubrication are properly performed. Repair or replace any malfunctioning, broken or missing parts before using the machine. Refer to the inspection and maintenance or maintenance schedule in the Operator's Manual.
- Check that all instructions and safety stickers are in place and readable.
- Never fill the fuel tank with the engine running or while near an open flame or while smoking.
- Always clean up any spilled fuel.
- Check for any warning tags placed on the machine, do not operate the machine until all repairs have been made and warning tags have been removed by authorized personnel.
- Know how to shut-down or stop the machine immediately in case of emergency.
- Know the capabilities and limitations of the machine such as speed and gradeability.
- Be aware of the dimensions of the machine such as height, weight especially for transporting.

### **1-6. Safety Instructions**

- Take all necessary precautions to ensure that the machine is used only when in a safe and reliable condition.
- Avoid any operational mode that might compromise safety.
- Operate the machine only if all protective and safety devices are in place and fully functional.

## **1-7. Starting**

- Watch that the warning lights and indicators during start-up and shutdown are working in accordance with operating instructions.
- Watch that no one is in danger before starting and when moving the machine.
- Hold the handle securely with your left hand to fix the machine body and pull the starter knob forcibly with your right hand to start the engine.
- When pulling up the starter knob, pull it from immediately behind the handle to prevent your hand from hitting the handle.

## **1-8. Operating**

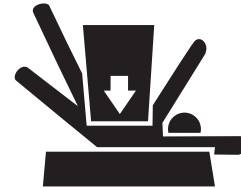
- Always make sure that there are no obstructions or persons in your line of travel before starting the compactor in motion.
- Use caution and be very observant when operating in close quarters and congested areas.
- Do not operate the compactor for driving a pile or on a solid ground exceeding capacity of the machine such as surface paved with asphalt, concrete, cobblestone, and solid rock. Otherwise, this may cause damage to the machine as too much stress is applied to the machine body.
- Do not get your hands off the handle while operating.
- When operating the compactor on a slope, operate it within a gradient of 1/4 (approx. 14 degrees).
- When operating the compactor on a ground surface with a large roughness and a large level difference, or on a steep slope, take care that you will not be injured in your wrist due to overturn or slip of the machine body.  
In addition, this may cause earlier damage to the machine as an excessive stress is also applied to the machine body.
- Be sure to stop the engine before leaving the compactor unattended.
- Never allow anyone to stand in the articulation area of the machine when the engine is running.
- Do not attempt to control the compactor travel speed with the throttle control. Maintain engine speed at the full operating RPM.
- Do not run the engine in a closed building for an extended period of time. Exhaust fumes can kill.

## **1-9. Stopping**

- Always park the machine in a safe area on solid and level ground.
- Lock all lockable compartments.

## 1-10. Maintenance

- In any performing any work concerning the operation, adjustment or modification of the machine or it's safety devices or any work related to maintenance, inspection or repair, always follow the start-up and shut-down procedures in the Operator's Manual and the Maintenance Manual.
- Ensure that the maintenance area is safe and secure.
- If the machine is shut down for maintenance or repair work it must be secured against inadvertent starting by removing the starter key and attaching a warning sign to the starter switch.
- The machine must be parked on stable and level ground.
- Immediately after the engine has stopped, the exhaust system, engine, radiator coolant, engine oil, hydraulic fluid and other lubricants and components will be very hot. Fluids can be under pressure, removing the radiator cap or draining oil or changing filters can cause serious burns. Wait until the machine has cooled down.
- Use care when attaching and securing lifting tackle to individual parts and large assemblies being removed or repositioned for repair purposes to avoid the risk of accident. Use lifting devices that are in perfect condition and of sufficient lifting capacity. Never stand under suspended loads.
- Always use the proper tools and workshop equipment in good condition when performing maintenance or repairs on the machine.
- Clean the machine, especially threaded connections of any traces of oil or fuel before carrying out any maintenance or repairs. Never use aggressive detergents. Use lint free cleaning rags.
- Examine all fuel, lubricant and hydraulic fluid lines and connectors for leaks, loose connections chafe marks or damage after cleaning.
- Repair or replace defective parts immediately.
- Never fill the fuel tank with the engine running, while near an open flame or while smoking. Always clean up any spilled fuel.
- Ensure safe operation, optimum performance of the machine and its warranty by using only genuine SAKAI replacement parts.



- Use only the specified fluids and lubricants. Substitute only products known to be equivalent from reputable manufacturers.
- Disconnect the battery cables when working on the electrical system or when welding on the compactor.
- Be sure the battery area is well ventilated (clear of fumes) should it be necessary to connect a jumper cable or battery charger. Fumes can ignite from a spark and may explode.
- Be sure battery charger is OFF when making connections if charging is required.
- Use only original fuses with the specified rating. Switch off the machine immediately if trouble occurs in the electrical system.
- Work on the electrical system may only be carried out by a qualified electrician or by a specially trained person according to electrical engineering principles.
- Inspect the electrical equipment of the machine at regular intervals. Defects such as loose connections or burnt or scorched wires must be repaired or replaced immediately.
- Do not weld, flame cut or perform grinding on the machine unless expressly authorized, as there may be a risk of fire or explosion. Disconnect the battery when welding on the machine.
- Clean the machine and its surrounding from dust or other flammable substances and make sure the area is adequately ventilated before beginning welding, flame cutting or grinding operations.
- Observe all product safety regulations when handling fuel, oils, grease, engine coolant and other chemical substances. Be careful especially when these items are hot as there is a risk of burning or scalding.
- Operate internal combustion engines and fuel operated heating systems only in adequately ventilated premises. Before starting the engine in an enclosed area, make sure there is sufficient ventilation.



### 1-11. Transporting the Machine

- Load and unload the machine in/from a transporting vehicle with two persons in order to avoid an accidental drop of the machine.
- Drain fuel from the fuel tank, the carburetor, and the fuel strainer before transporting it on a long distance or on a rough road.

---

---

# **SPECIFICATIONS**

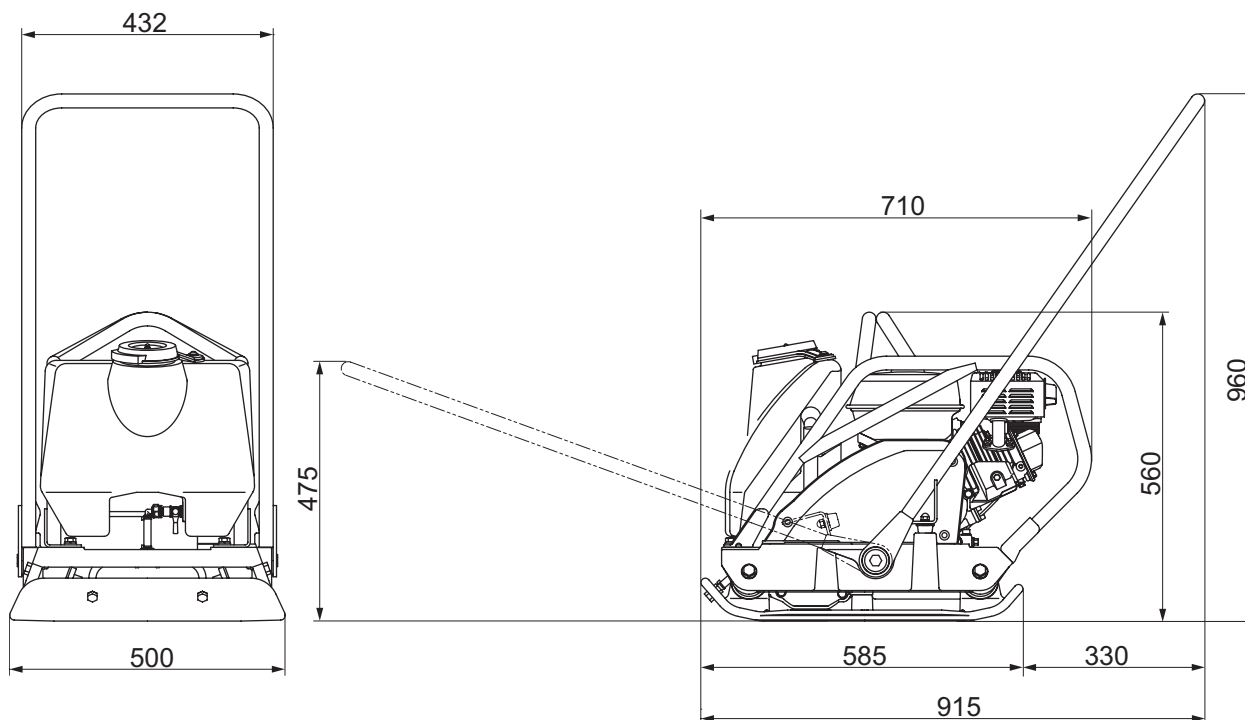
---

---





# 1. SPECIFICATION DATA



0496-99004-0-10111-A

Model		PC800	
Weight		99 kg	( 220 lbs. )
Dimensions	Overall length	915 mm	( 36.0 in. )
	Overall width	500 mm	( 19.5 in. )
	Overall height	960 mm	( 38.0 in. )
	Vibrating plate (width × length)	500 mm × 585 mm	( 19.5 in. × 23.0 in. )
	Compaction width	500 mm	( 19.5 in. )
Speed		25 to 30 m/min	( 82 to 98 ft/min )
Vibration performance	Frequency	97.0 Hz	
	Centrifugal force	16.2 kN	( 3,640 lbs. )
Engine	Name		HONDA GX160 Gasoline Engine
	Model		Air-cooled, 4-cycle, 25° inclined, 1-cylinder
	Displacement		0.163 L ( 9.9 cu.in )
	Performance	Continuous rated output	2.9 kW ( 3.9 HP )
		Max. output	-
		Max. torque	11.0 N·m ( 8.1 lbf-ft )
	Air cleaner		Dry type
	Starting system		Recoil starter
Power line	Transmission	V-belt	
Vibrating system	Vibrator	Eccentric shaft type	
	Clutch	Centrifugal type	

## 2. FUEL AND LUBRICANT

### 2-1. Fuel

Fuel to be employed: Regular gasoline for automobile

Fuel tank capacity: 3.6 liters

### 2-2. Engine Oil/Vibrator Oil

Season	Ambient temperature	Viscosity rating (API/SE or higher grade)
Summer	25°C and above	SAE#30
Spring/Autumn	10°C to 25°C	SAE#20 or #30
Winter	-10°C to 10°C	SAE#20
All-year-round	Regardless of temperature	SAE 10W-30

### 3. TIGHTENING TORQUE CHART

N·m	(lbf·ft)
-----	----------

	Nominal Dia.	Pitch	Strength Classification							
			6.8		8.8		10.9		12.9	
Metric coarse screw	5	0.8	4.9	(3.6)	5.9	(4.4)	7.8	(5.8)	7.8	(5.8)
	6	1.0	7.8	(5.8)	9.8	(7.2)	13	(9.6)	13	(9.6)
	8	1.25	17	(13)	23	(17)	31	(23)	31	(23)
	10	1.5	39	(29)	49	(36)	59	(44)	59	(44)
	12	1.75	69	(51)	78	(58)	108	(80)	108	(80)
	14	2.0	98	(72)	127	(94)	167	(123)	167	(123)
	16	2.0	157	(116)	196	(145)	265	(195)	265	(195)
	18	2.5	196	(145)	245	(181)	343	(253)	343	(253)
	20	2.5	294	(217)	392	(289)	539	(398)	539	(398)
	22	2.5	441	(325)	539	(398)	686	(506)	686	(506)
	24	3.0	539	(398)	637	(470)	883	(651)	883	(651)
	27	3.0	785	(579)	981	(724)	1324	(977)	1324	(977)
	30	3.5	1079	(796)	1324	(977)	1765	(1302)	1765	(1302)
Metric fine screw	10	1.25	39	(29)	49	(36)	69	(51)	69	(51)
	12	1.25	69	(51)	88	(65)	118	(87)	118	(87)
	14	1.5	108	(80)	137	(101)	186	(137)	186	(137)
	16	1.5	167	(123)	206	(152)	284	(209)	284	(209)
	18	1.5	245	(181)	294	(217)	392	(289)	392	(289)
	20	1.5	343	(253)	441	(325)	588	(434)	588	(434)
	22	1.5	490	(361)	588	(434)	785	(579)	785	(579)
	24	2.0	588	(434)	735	(542)	981	(724)	981	(724)
	27	2.0	834	(615)	1030	(760)	1422	(1049)	1422	(1049)
	30	2.0	1177	(868)	1422	(1049)	1961	(1446)	1961	(1446)



---

---

# **INSPECTION AND MAINTENANCE**

---

---



# 1. INSPECTION AND MAINTENANCE

## 1-1. Engine

Refer to a separate Engine Operation Manual for the engine.

## 1-2. Compactor Body

Wipe off dust, dirt, and oil stuck to the machine to check that it is in good order.

Check the bolts for tightness and check intensively around the engine, the belt cover, the cushion rubber, the control handle, and the sling hook.

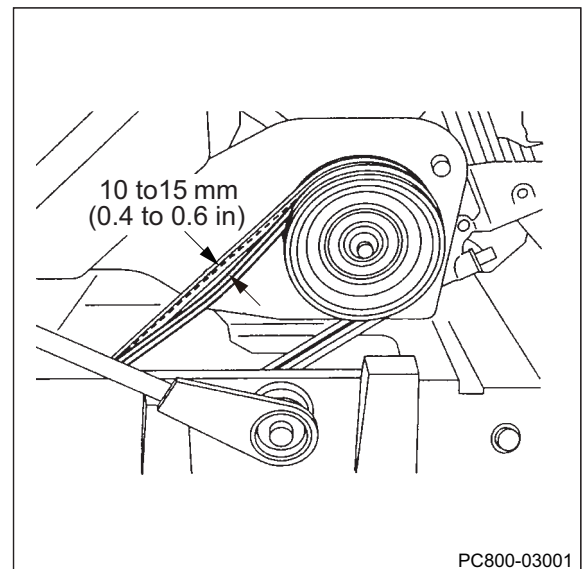
## 1-3. V-belt

### **CAUTION**

Never attempt to check the V-belt with the engine running. Severe injury can occur if hand get's caught between the V-belt and clutch.

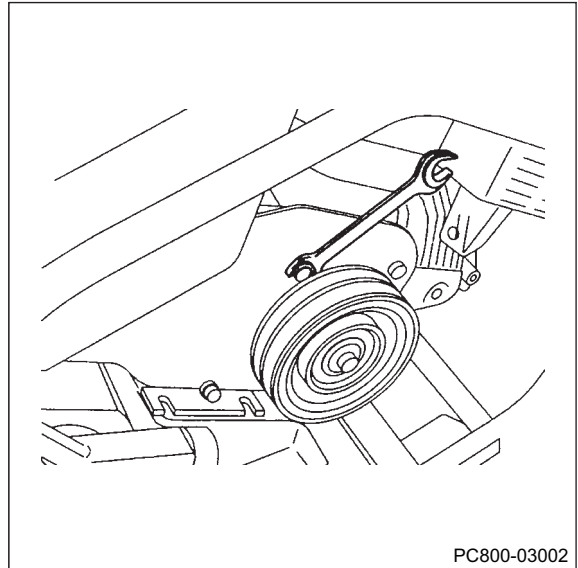
Check the V-belt for its tension.

Adjust the tension so that it deflects 10 mm (0.4 in.) to 15 mm (0.6 in.) with a pressure applied with your thumb to a center point between both shafts.

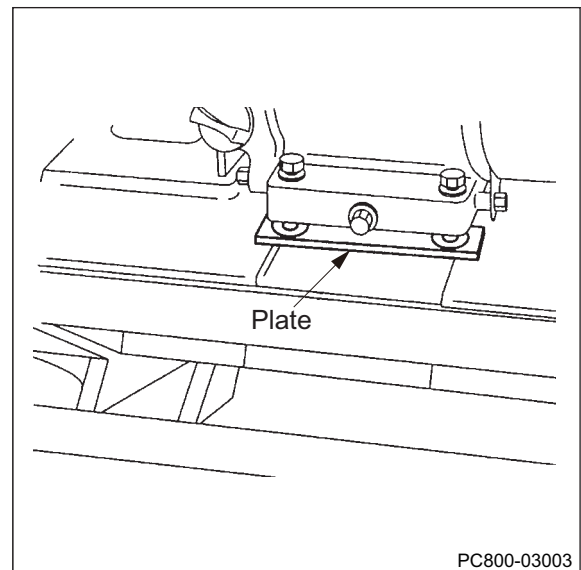


## INSPECTION AND MAINTENANCE

- 1) Remove the front cover (standard type), water tank (water sprinkler system type.)
- 2) Loosen 4 bolts which secure the engine.
- 3) Remove the belt cover.
- 4) Remove the V-belt.
- 5) Remove the plates on the inside belt cover.
- 6) Loosen 4 bolts a little bit which secure the inside belt cover.



- 7) Insert the plates to the bottom of the engine.
- 8) Re-tighten 4 bolts of two places.
- 9) Set the V-belts.





## 1-4. Vibrator

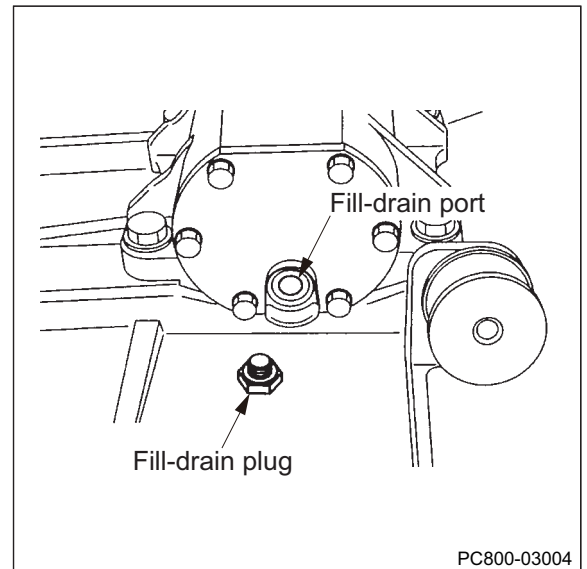
- 1) Stop the engine and keep the compactor level.
- 2) Remove the fill-drain plug to check that the oil spills out of the plug.
- 3) Supply oil if it has been found insufficient.

### How to change oil:

- Remove the belt cover, V-belts, and 4 bolts which secure the base. Remove the upper parts which installed a engine, cage from the body. Then remove the drain plug, Fill-Drain plug, or the oil level gauge and tilt the compactor body to drain the oil, then fill the new oil. Wipe off oil stuck on the outside of compactor after oil change.
- Change oil at an interval of either one month or 200 operating hours which comes first.

### Specified oil quantity (when in replacement):

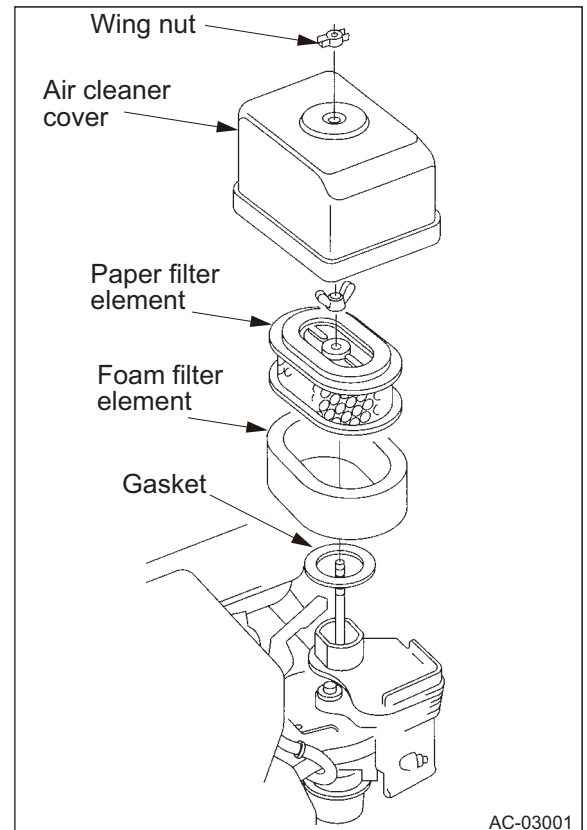
**0.35 L (0.09 gal.)**



## 1-5. Air Cleaner

- 1) Remove the wing nut from the air cleaner cover, and remove the cover.
- 2) Remove the wing nut from the air filter, and remove the filter.
- 3) Remove the foam filter from the paper filter.
- 4) Inspect both air filter elements, and replace them if they are damaged. Always replace the paper air filter element at the scheduled interval.
- 5) Clean the air filter elements if they are to be reused.

- Paper air filter element :
  - Tap the filter element several times on a hard surface to remove dirt.
  - Blow compressed air [207 kPa (30 psi)] through the filter element from the inside.
  - Never try to brush off dirt; brushing will force dirt into the fibers.
- Foam air filter element :
  - Clean in warm soapy water, rinse, and allow to dry thoroughly.
  - Clean in nonflammable solvent and allow to dry. Dip the filter element in clean engine oil, then squeeze out all excess oil.





---

---

# **PARTS CATALOGUE**

---

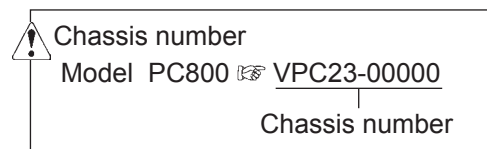
---



# 1. GUIDE FOR USE OF PARTS CATALOGUE

1. Quote the following when placing an order for parts.

- (1) Vehicle model
- (2) Chassis number
- (3) Part number
- (4) Part name
- (5) Quantity of required parts.



The vehicle model and chassis number are engraved on the identification plate, and chassis number is also punched on the frame.

2. The chassis number to which parts are applicable are described in the remarks column as follows.

-No.10007 : Applicable up to 10007

No.10008- : Applicable from 10008

3. Each quantity shown in the quantity column is in principle one applied to a unit of vehicle.

However, each quantity as related to ASSEMBLY PARTS indicates one included in a single unit of assembly.

4. The following abbreviated words are used in this parts catalogue.

LH : Lefthand viewed from behind of vehicle.

RH : Righthand viewed from behind of vehicle.

Inc. ○ - ○ : Key number of parts constituting an assembly

OP : Option

N/S : Parts not to be supplied by a single piece

A/S : Parts to be supplied as an assembly composed or a kit of parts

AR : As required

Dom. : For use in Japan

Exp. : For use in countries other than Japan

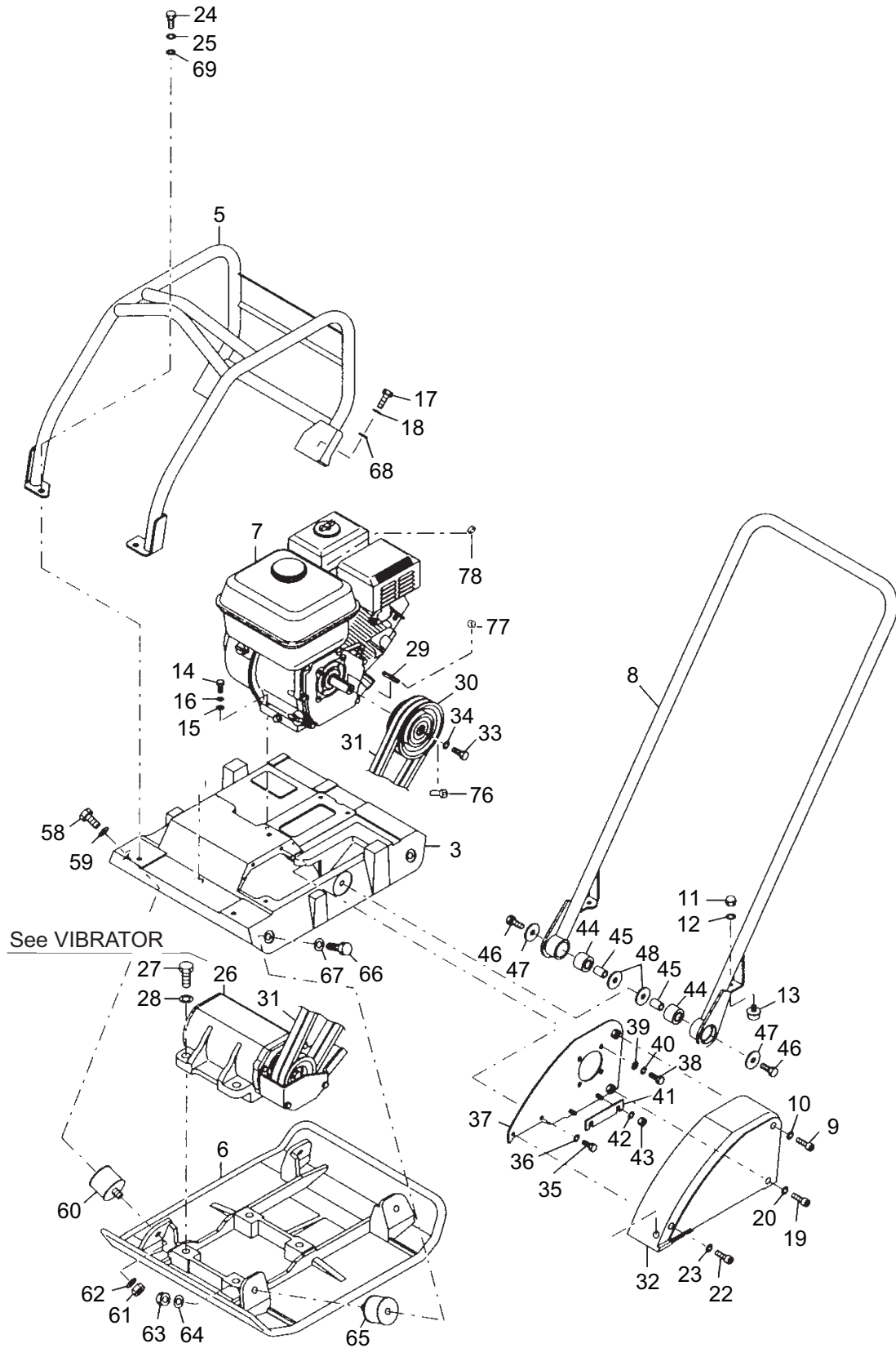
\*SEE PAGE ○○ : See page ○○ for component parts.

5. Part with "(cf. ○)" in the remarks column indicates that it is supplied as an assembly represented by the key number ○ with which "cf." is attached. Quote the part number that follows the key number ○ when ordering.

6. Part number with a mark "\*" indicate that they have been corrected to the ones listed just below them. Quote the renewed part numbers when ordering.

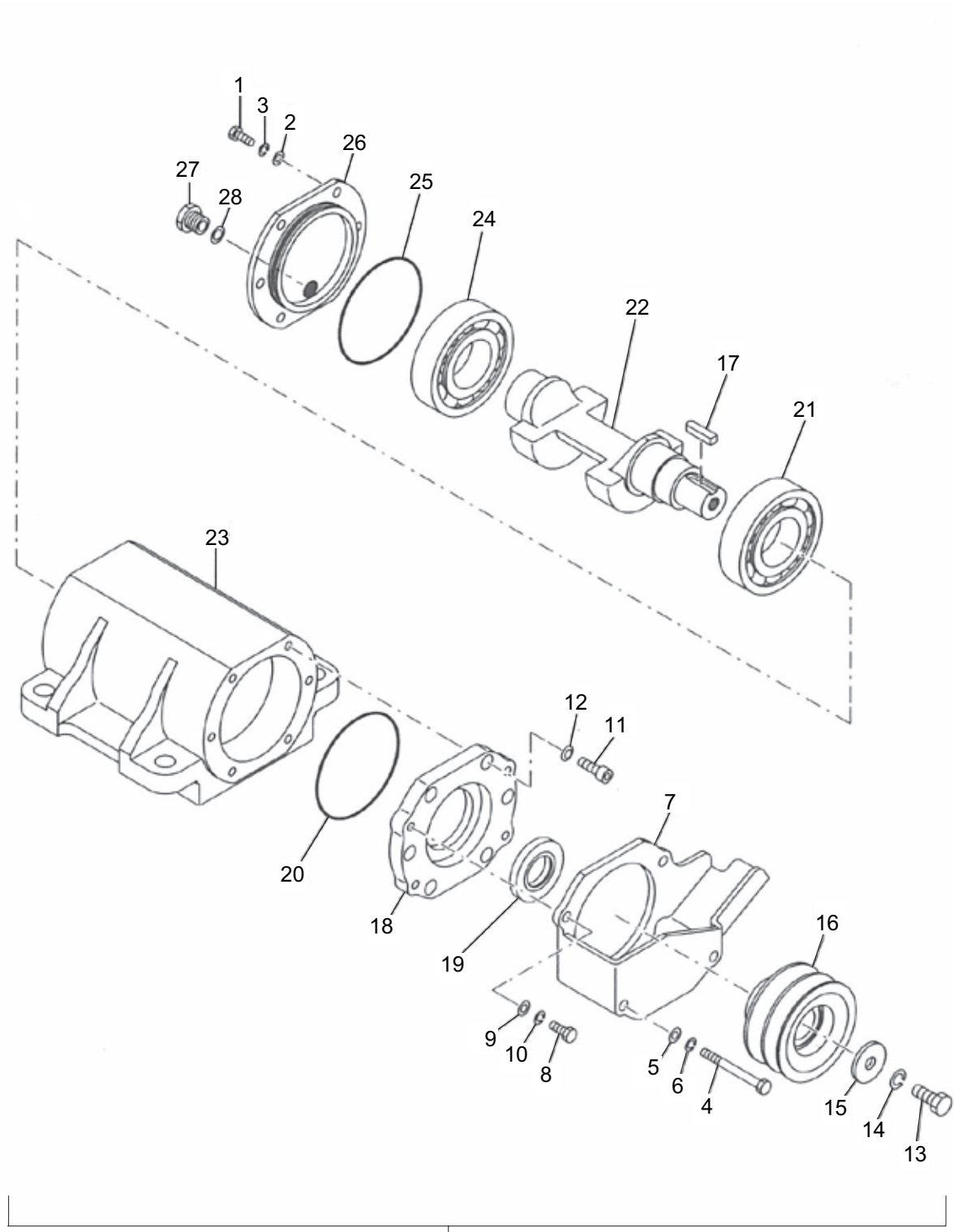
7. Parts are subject to change without notice.

## 2. FRAME



記号 Key No.	部品番号 Parts No.	部品名称	Parts Name	数量 Q'ty	備考 Remarks
3	1496-47002-2	ベース	BASE	1	
5	1496-47080-0	ガード	GUARD	1	
6	1496-47001-1	プレート	PLATE	1	
7	4030-08000-1	エンジン	ENGINE	1	INC.29 HONDA GX160
8	1496-47004-0	ハンドル	HANDLE	1	
9	2107-08080-3	ボルト	BOLT	1	
10	2172-08012-1	コニカルワッシャ	CONICAL SPRING WASHER	1	
11	3120-40014-0	ナット	NUT	2	
12	2171-08020-0	スプリングワッシャ	SPRING WASHER	2	
13	1496-47014-0	ストッパ	STOPPER	2	
14	2107-08045-3	ボルト	BOLT	4	
15	2170-08016-0	ワッシャ	WASHER	4	
16	2172-08012-1	コニカルワッシャ	CONICAL SPRING WASHER	4	
17	2100-10030-1	ボルト	BOLT	2	
18	2171-10025-0	スプリングワッシャ	SPRING WASHER	2	
19	3100-56037-0	ボルト	BOLT	1	
20	2172-08012-1	コニカルワッシャ	CONICAL SPRING WASHER	1	
22	2107-08090-3	ボルト	BOLT	1	
23	2172-08012-1	コニカルワッシャ	CONICAL SPRING WASHER	1	
24	2100-10030-1	ボルト	BOLT	2	
25	2171-10025-0	スプリングワッシャ	SPRING WASHER	2	
26	0496-47001-0	起振体	VIBRATOR	1	
27	2100-16050-3	ボルト	BOLT	4	
28	2170-16045-2	ワッシャ	WASHER	4	
29	2196-05036-1	キー	SUNK KEY	1	
30	4421-07000-0	クラッチ	CLUTCH	1	
31	2447-10031-0	Vベルト	V-BELT	2	
32	1496-47060-0	カバー	COVER	1	
33	2107-08040-3	ボルト	BOLT	1	
34	2172-08012-1	コニカルワッシャ	CONICAL SPRING WASHER	1	
35	2100-08020-1	ボルト	BOLT	1	
36	2171-08020-0	スプリングワッシャ	SPRING WASHER	1	
37	1496-47065-0	カバー	COVER	1	
38	2100-08025-1	ボルト	BOLT	4	
39	2170-08020-1	ワッシャ	WASHER	4	
40	2171-08020-0	スプリングワッシャ	SPRING WASHER	4	
41	1596-47507-0	シム	SHIM	2	
42	2170-08020-1	ワッシャ	WASHER	2	
43	1461-47048-0	ナット	NUT	2	
44	1496-47053-0	ブッシュ	BUSH	2	
45	1496-47012-1	カラー	COLLAR	2	
46	2100-12050-1	ボルト	BOLT	2	
47	1496-47070-0	ワッシャ	WASHER	2	
48	1496-47070-0	ワッシャ	WASHER	2	
58	2100-12035-1	ボルト	BOLT	2	
59	2170-12032-2	ワッシャ	WASHER	2	
60	3460-40081-0	ダンパ	DAMPER	2	
61	1579-47290-0	ナット	NUT	2	
62	2170-12032-2	ワッシャ	WASHER	2	
63	1579-47290-0	ナット	NUT	2	
64	2170-12032-2	ワッシャ	WASHER	2	
65	3460-40081-0	ダンパ	DAMPER	2	
66	2100-12035-1	ボルト	BOLT	2	
67	2170-12032-2	ワッシャ	WASHER	2	
68	2170-10032-2	ワッシャ	WASHER	2	
69	2170-10032-2	ワッシャ	WASHER	2	
76	1496-47088-0	ワッシャ	WASHER	1	
77	1496-47089-0	カラー	COLLAR	1	
78	2120-05040-0	ナット	NUT	1	

### 3. VIBRATOR

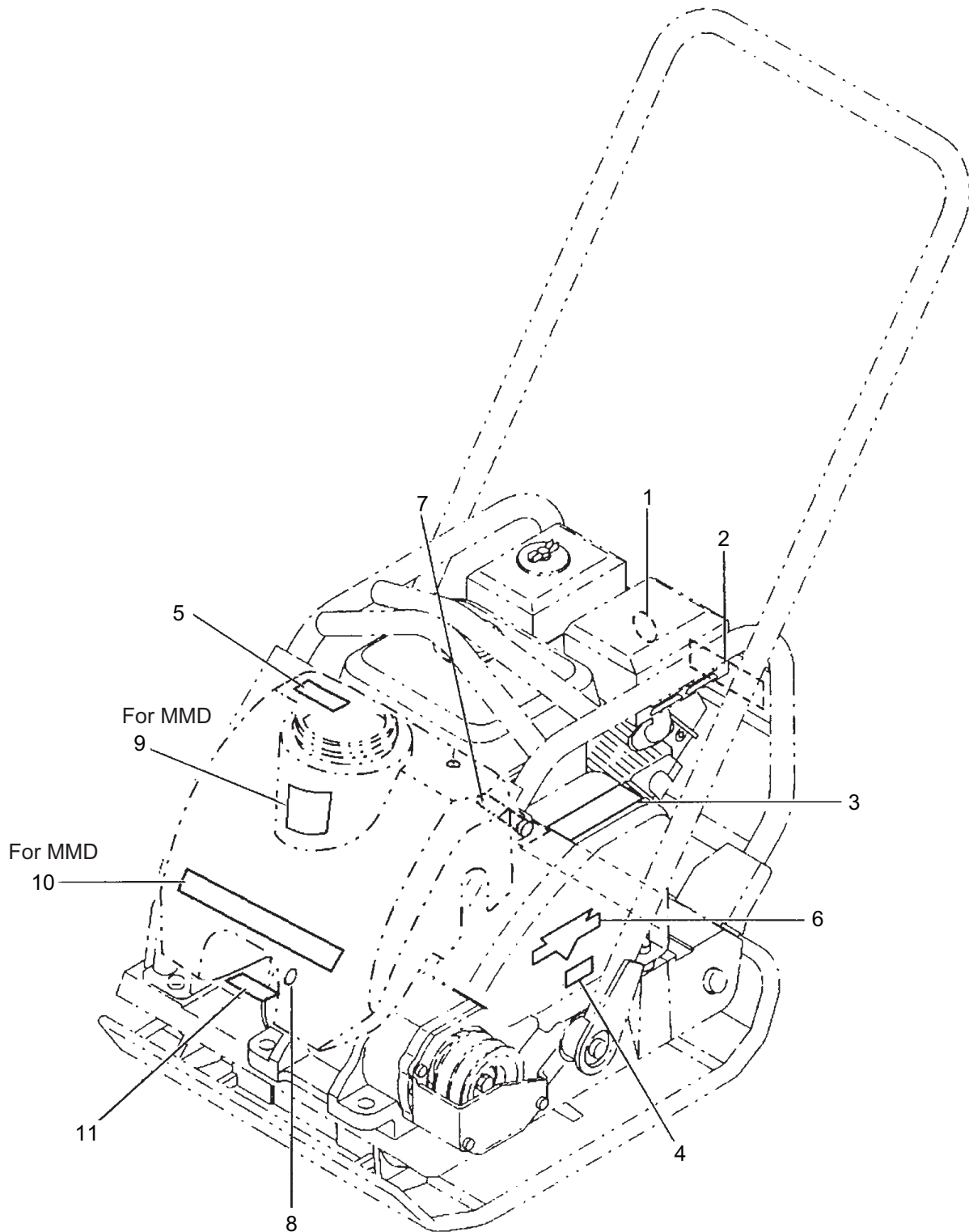


29



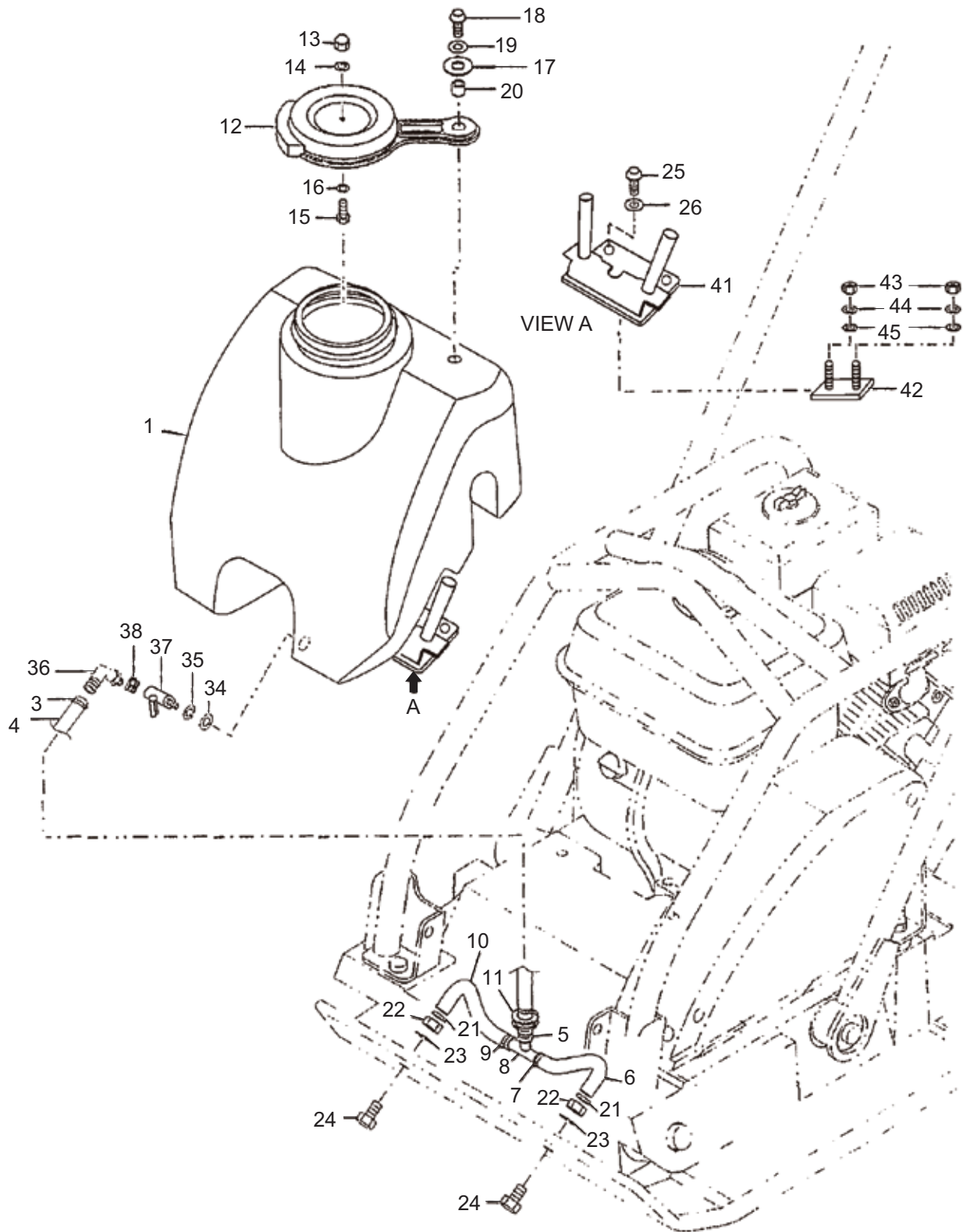
記号 Key No.	部品番号 Parts No.	部品名称	Parts Name	数量 Q'ty	備考 Remarks
1	2100-08025-1	ボルト	BOLT	6	
2	2170-08016-0	ワッシャ	WASHER	6	
3	2171-08020-0	スプリングワッシャ	SPRING WASHER	6	
4	2100-08085-1	ボルト	BOLT	2	
5	2170-08023-2	ワッシャ	WASHER	2	
6	2171-08020-0	スプリングワッシャ	SPRING WASHER	2	
7	1496-47008-1	カバー	COVER	1	
8	2100-08020-1	ボルト	BOLT	2	
9	2170-08023-2	ワッシャ	WASHER	2	
10	2171-08020-0	スプリングワッシャ	SPRING WASHER	2	
11	2107-08025-3	ボルト	BOLT	6	
12	2172-08012-1	コニカルワッシャ	CONICAL SPRING WASHER	6	
13	2100-12020-1	ボルト	BOLT	1	
14	2171-12030-0	スプリングワッシャ	SPRING WASHER	1	
15	3931-01237-0	ワッシャ	WASHER	1	
16	1494-47006-0	プーリ	PULLEY	1	
17	2196-08032-1	キー	SUNK KEY	1	
18	1496-47010-0	リテーナ	RETAINER	1	
19	2602-02369-0	オイルシール	OIL SEAL	1	
20	2630-01095-1	Oリング	O-RING	1	
21	1591-47022-0	ベアリング	BEARING	1	
22	1496-47009-0	シャフト	SHAFT	1	
23	1496-47007-2	ケース	CASE	1	
24	1591-47022-0	ベアリング	BEARING	1	
25	2630-01095-1	Oリング	O-RING	1	
26	1496-47011-0	カバー	COVER	1	
27	1462-47065-0	プラグ	PLUG	1	
28	1579-47030-1	パッキン	PACKING	1	
29	0496-47001-0	起振体	VIBRATOR ASSY	1	INC.1-28

## 4. NAME PLATE



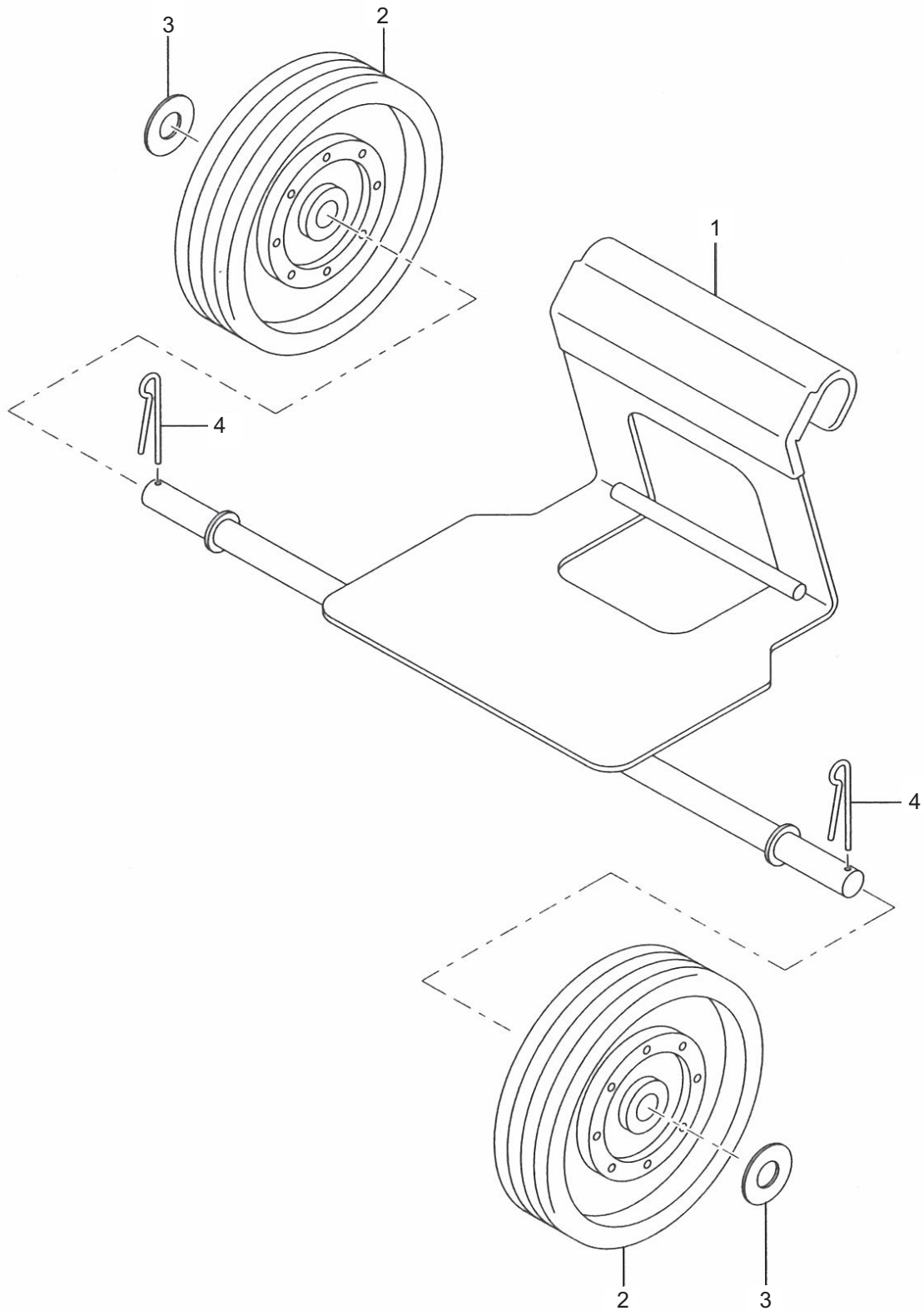
記号 Key No.	部品番号 Parts No.	部品名称	Parts Name	数量 Q'ty	備考 Remarks
1	3998-06140-0	デカール：注意	DECAL: NOTICE	1	
2	3998-16491-2	デカール：警告	DECAL: WARNING	1	
3	3998-16490-0	デカール：危険	DECAL: DANGER	1	
4	3998-14202-0	デカール	DECAL	1	
5	3998-14449-1	デカール：ウォーター	DECAL: WATER	1	
6	1483-47179-0	デカール：社名	DECAL: SAKAI	1	
7	1496-47062-0	デカール	DECAL	1	
8	1579-47510-1	デカール	DECAL	1	
9	1496-19002-0	デカール	DECAL	1	FOR MMD
10	1496-19003-0	デカール	DECAL	1	FOR MMD
11	1496-19004-0	デカール	DECAL	1	

# 5. SPRINKLER SYSTEM



記号 Key No.	部品番号 Parts No.	部品名称	Parts Name	数量 Q'ty	備考 Remarks
1	1496-47085-0	タンク	TANK	1	
3	2898-00102-0	バンド	BAND	1	
4	1496-47087-0	ホース	HOSE	1	
5	2898-00102-0	バンド	BAND	1	
6	1496-47031-0	ホース	HOSE	1	
7	2898-00102-0	バンド	BAND	1	
8	1496-47049-0	ジョイント	JOINT	1	
9	2898-00102-0	バンド	BAND	1	
10	1496-47031-0	ホース	HOSE	1	
11	1496-47022-0	ブッシュ	BUSH	1	
12	1586-75004-0	ケース	CAP	1	
13	3120-40015-0	ナット	NUT	1	
14	1496-47037-0	ワッシャ	WASHER	1	
15	3100-00121-0	ボルト	BOLT	1	
16	1496-47037-0	ワッシャ	WASHER	1	
17	1496-47034-0	ワッシャ	WASHER	1	
18	3100-50034-0	ボルト	BOLT	1	
19	1496-47039-0	ワッシャ	WASHER	1	
20	1496-47033-0	スペーサ	SPACER	1	
21	2898-00102-0	バンド	BAND	2	
22	2120-10080-0	ナット	NUT	2	
23	2171-10025-0	スプリングワッシャ	SPRING WASHER	2	
24	1496-47069-0	ボルト	BOLT	2	NOZZLE
25	2100-10025-1	ボルト	BOLT	2	
26	2171-10025-0	スプリングワッシャ	SPRING WASHER	2	
34	1496-47023-0	パッキン	PACKING	1	
35	1496-47025-0	ワッシャ	WASHER	1	
36	1499-47106-0	ホースニップル	HOSE NIPPLE	1	
37	1499-47108-0	コック	COCK	1	
38	1499-47107-0	スペーサ	SOCKET	1	
41	1496-47084-0	スタンド	STAND	1	
42	1496-47090-0	ボルト	BOLT	1	
43	2120-10080-0	ナット	NUT	2	
44	2171-10025-0	スタンド	SPRING WASHER	2	
45	2170-10032-2	ワッシャ	WASHER	2	

## 6. CARRIER (OPTION)



記号 Key No.	部品番号 Parts No.	部品名称	Parts Name	数量 Q'ty	備考 Remarks
1	1496-47063-0	シャフト	SHAFT	1	
2	4408-65000-0	タイヤ	TIRE	2	
3	2170-20030-0	ワッシャ	WASHER	2	
4	2157-40030-0	ワリピン	SPLIT PIN	2	

**PC800**  
**SHOP MANUAL**  
**SAKAI HEAVY INDUSTRIES, LTD.**

**Head office:** Seiwa Bldg., 4-8, Shibadaimon 1-chome,  
Minato-ku, Tokyo, Japan

**Telephone:** +81-3-3434-3401

**Global Service Division:** 2500 Takayanagi, Kuki-shi, Saitama, Japan

**Telephone:** +81-480-52-1111